

VPN Client Setup Instructions

We set up a VPN account for your use with the Cisco AnyConnect VPN application, which you will need to install on your home Windows PC.

Below are the connection settings when you run the AnyConnect VPN application. You may need to go to the setup for the VPN (the gear symbol at the lower left of the AnyConnect main screen) and un-check "Block connections to untrusted servers."

1. Cisco AnyConnect VPN initial install (one time only):

To download and install the Cisco AnyConnect software for Windows or Mac, please open your browser and go to: <https://bit.ly/2TXe1td>

Please use the Chrome Browser if you have it, as the download only works on browsers that do not have JAVA support. Chrome does not normally support JAVA, so that is a good browser to use.

Please use your login credentials (shown below) to log on using your browser. (password will be sent to you separately).

Be sure to select the ANYCONNECT_XXX group first, then enter your ID and password.

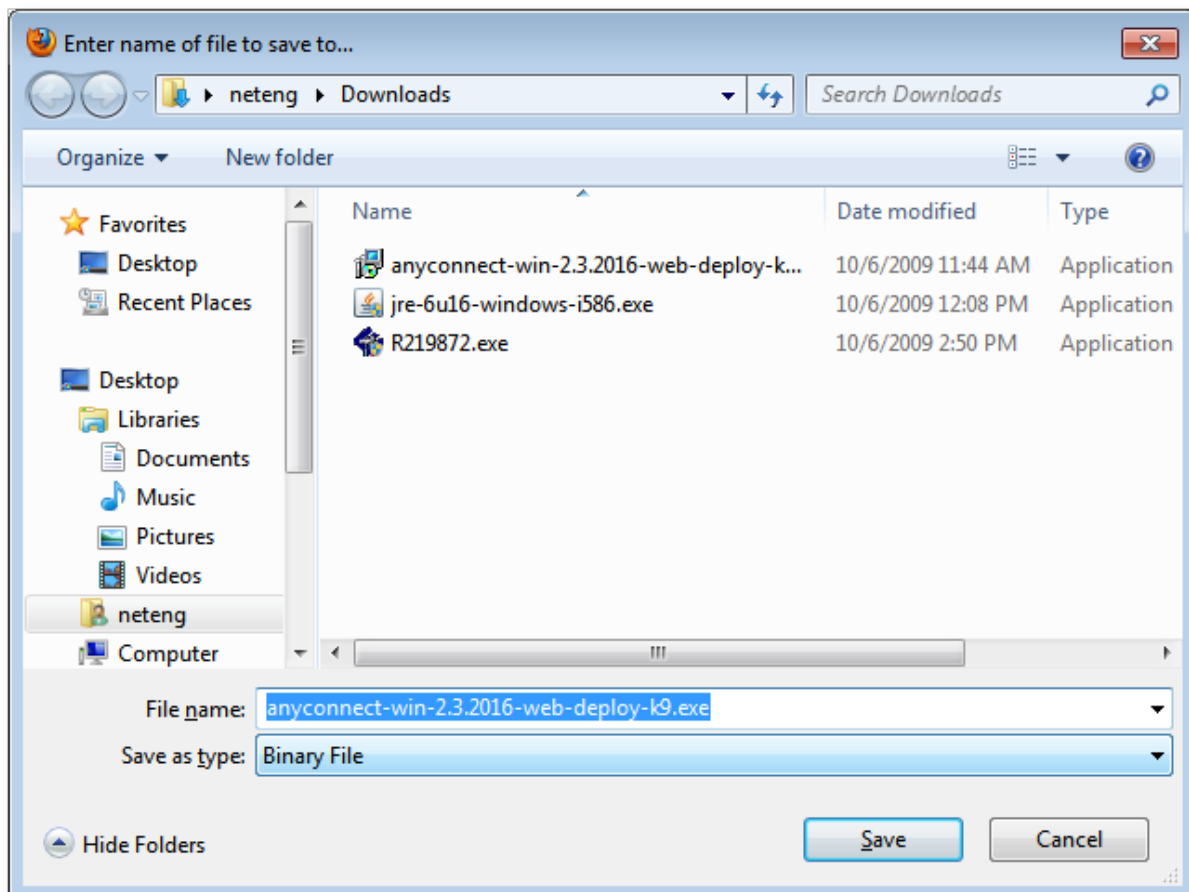
The web site will try to log you into the GCC VPN, but it will notice you do not have the necessary software. It will ask you if you would like to download it. See the following dialog boxes:

Manual Installation



Click on the "Windows" link to download the installer application.

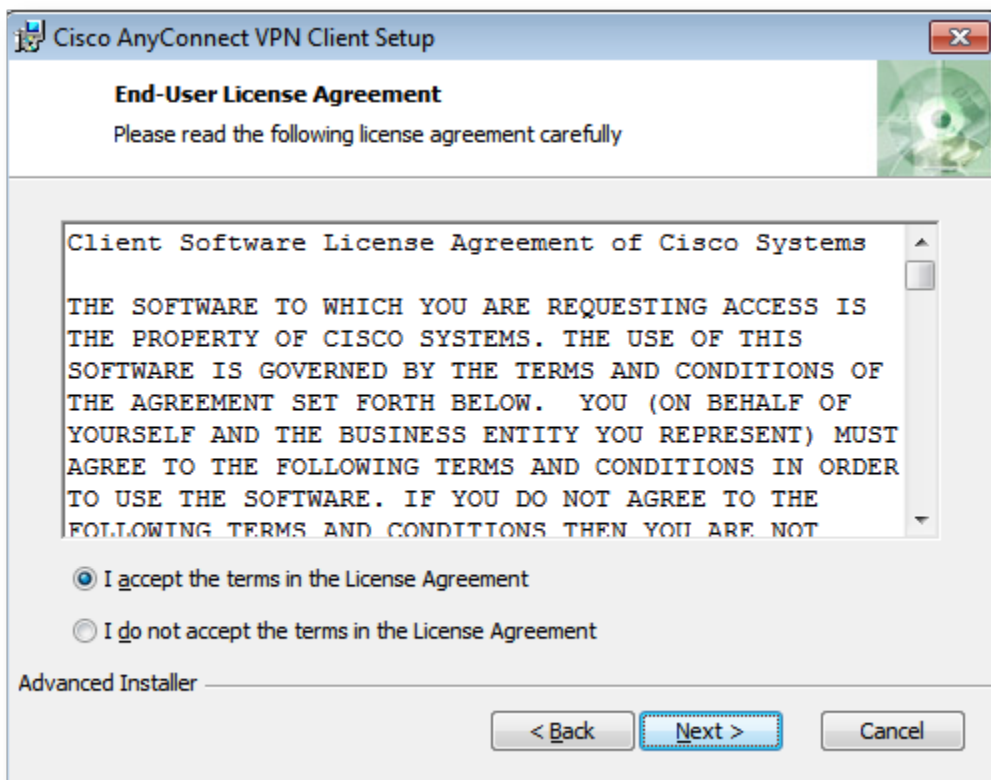
Depending on your browser settings, you may get a dialog asking you where to save the installer file, or it may automatically choose where to store it. Typical locations are the Downloads folder or the Desktop. If you choose where to store the file, be sure to choose a location you will remember. Be sure to press "SAVE".



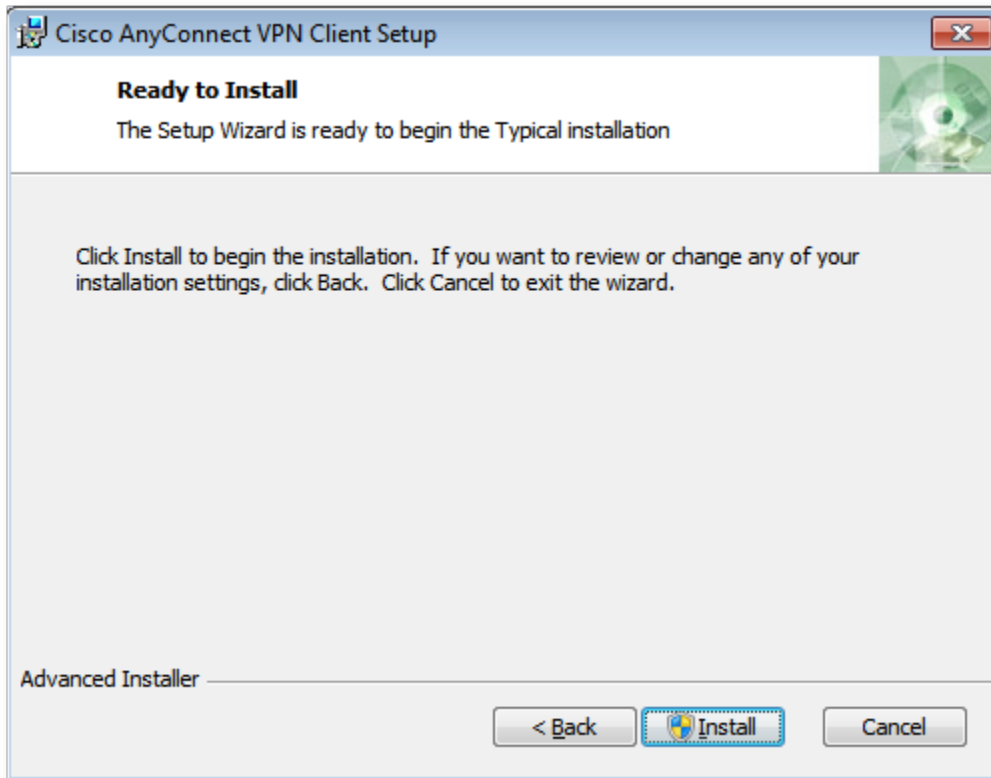
Now close your web browser application and locate the installer application file you just downloaded. Double-click on the file to launch it. The installation wizard will begin the installation process. Click on the Next button.



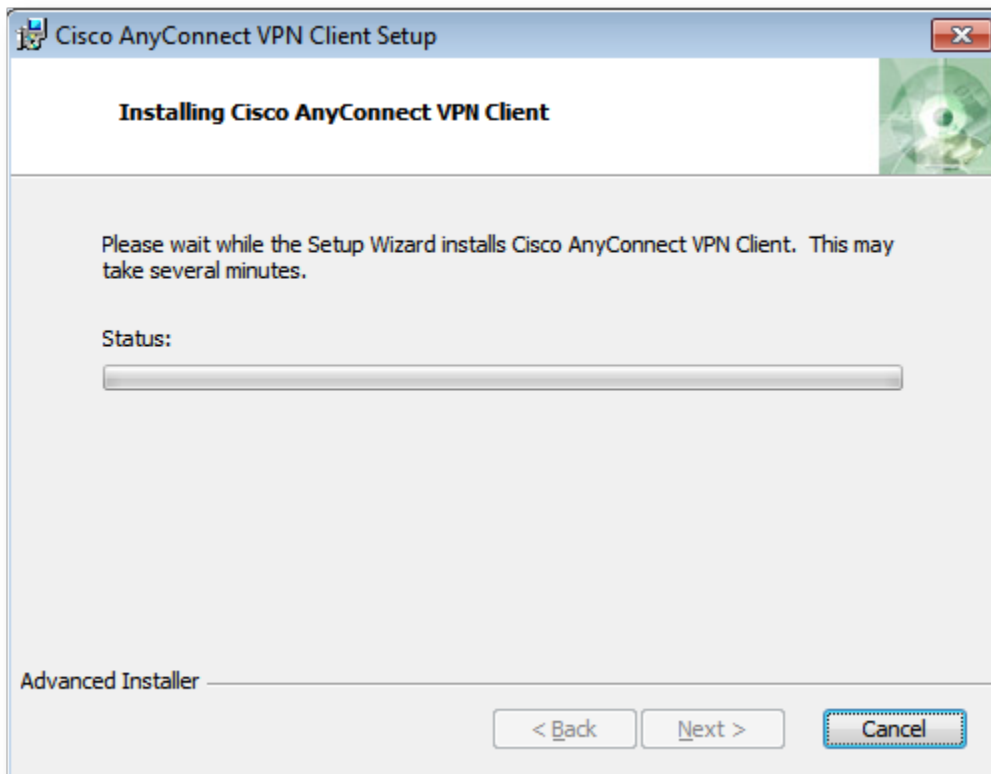
The installer will present the license agreement. Click on the "I agree ..." radio button. The Next button will highlight. Click on it to continue.



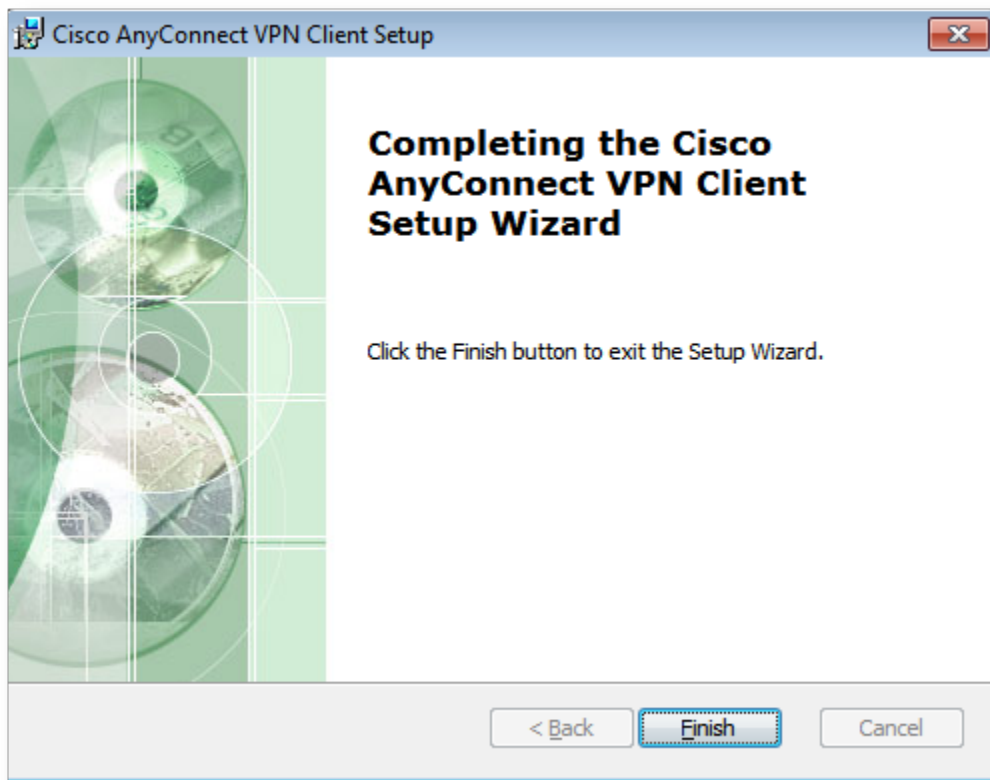
Now the installer will present the Ready to Install dialog. Click on the Install button.



Now the installer will present a status dialog. If you are running Vista or Windows 7 you may see a User Account dialog asking permission to continue. Click on the Yes button.



The installation will proceed. When it has finished, you'll see the Completed dialog. Click on the Finish button.



You should now have a successfully installed AnyConnect VPN client.

You can delete the installer application after the manual install process. (Don't delete the VPN Client itself, but feel free to delete the installer program you downloaded earlier). The AnyConnect client has an auto update feature which will keep the client current.

To run the VPN client after installing, locate the AnyConnect VPN client icon (possibly on the desktop or under "All Programs" on your START button and follow the instructions below for logging onto the AnyConnect client).

2. Using the VPN (done every time you want to connect to GCC.... be sure to disconnect the VPN when done using GCC resources):

CONNECTION ADDRESS: [VPN.GLENDALE.EDU](https://vpn.glendale.edu)

group: ANYCONNECT_RDP

userid: <your_username>@glendale.edu

Password: IT will deliver your password in person or text it to you provide cell phone number

If you receive any "Untrusted" messages while connecting, please just accept them.

Each time you want to connect to the Virtual Private Network (VPN) you must start the VPN Client. When you have completed using the VPN connection, be sure to go to the AnyConnect client and click "Disconnect"

October 1, 2020

Once logged into the VPN, you can use the Remote Desktop program on your computer to access your office computer remotely (through the secure VPN). When you start your Remote Desktop Connection program (after starting the VPN) it will ask you which computer to connect to. To connect to your office computer at GCC enter this IP address when prompted: YourDesktopIPAddress. Remember, your GCC office computer must be turned on and awake or it will not allow remote connections.

Please contact ITS if you have any questions or problems. I know the instructions are somewhat daunting, but once you get it to work the first time, it is a quick and easy to use process.