

READY AND ABLE: GCC in the COVID environment



Classified Institute
October 7, 2020

“our GCC” Vision



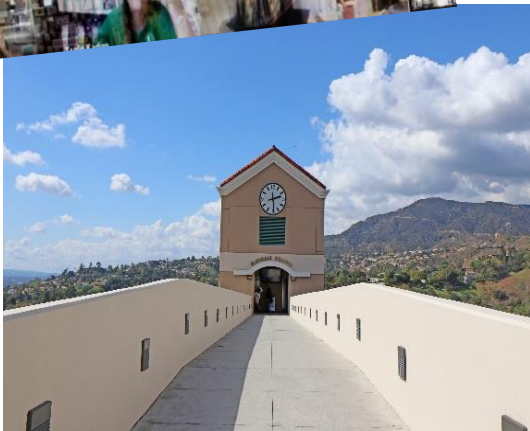
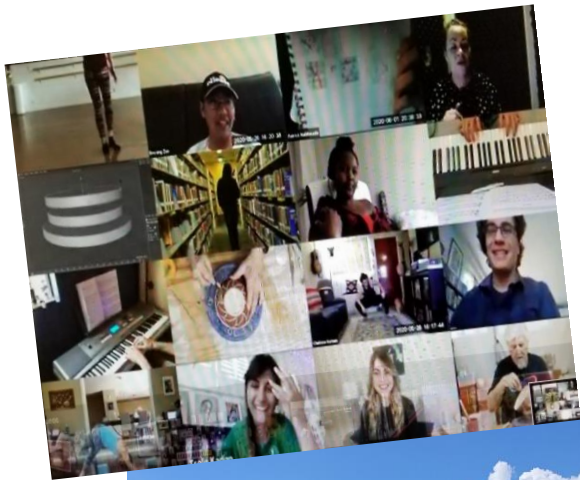
GCC aspires to be the Greater Los Angeles Region’s premier learning community where all students achieve their informed educational goals through outstanding instruction and student support services, a comprehensive community college curriculum, and opportunities found in few community colleges.



Ready and Able Decisions Made



- ▶ Remote instruction and work
- ▶ Campuses closed
- ▶ Technology access
- ▶ Emergency funds to students



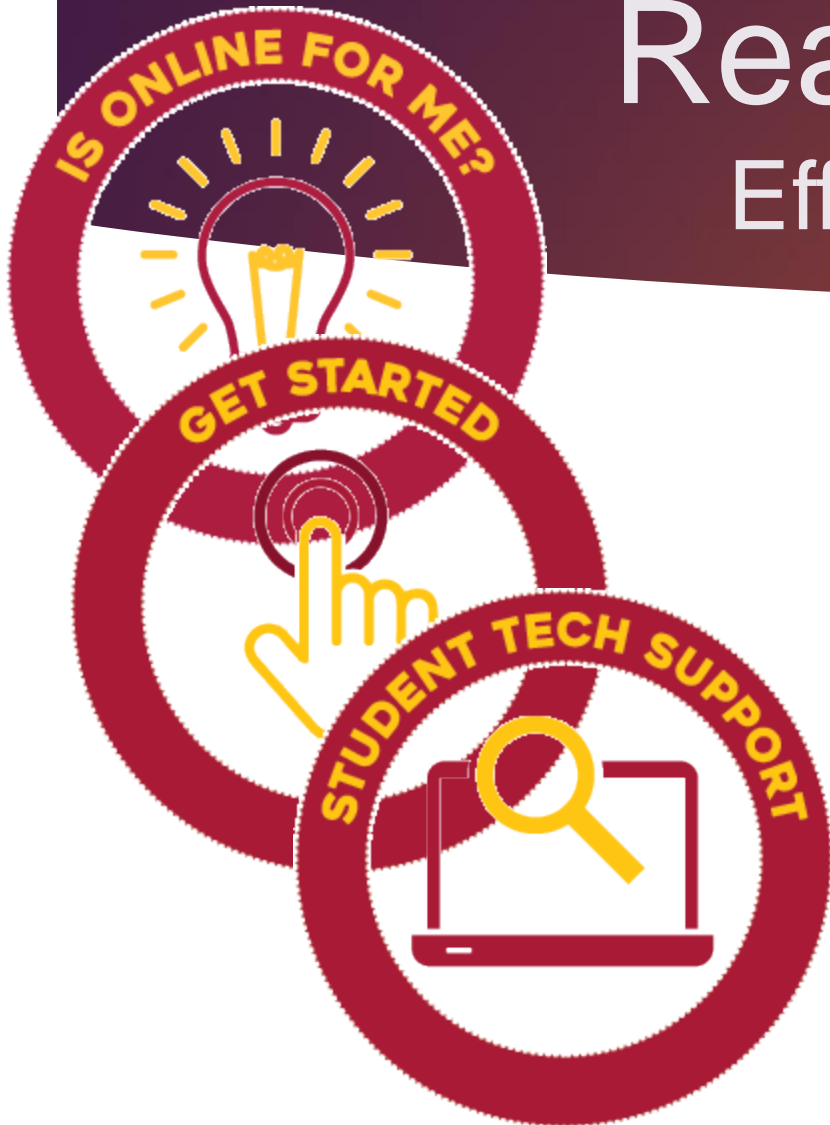
Ready and Able Online Student Resources



- ▶ A and R
- ▶ Financial Aid
- ▶ Counseling
- ▶ Textbooks
- ▶ Canvas and Zoom training
- ▶ EOPS
- ▶ DSPS
- ▶ Tutoring
- ▶ Library
- ▶ Student affairs
- ▶ Student Equity
- ▶ Career services
- ▶ Transfer center
- ▶ Health services
- ▶ Scholarships
- ▶ International students
- ▶ CalWORKS

Ready and Able

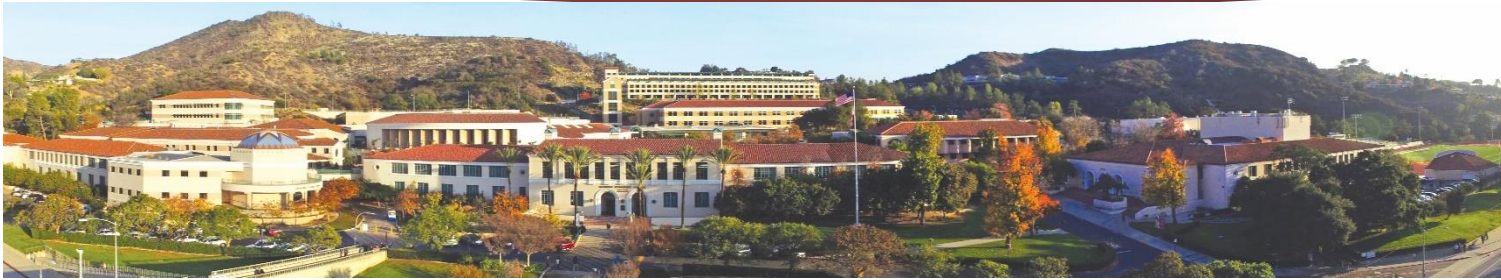
Effect on Students



- 63% said remote instruction working well
- Retention rate dropped from 86% to 83%
- Course success rate stayed at 75%

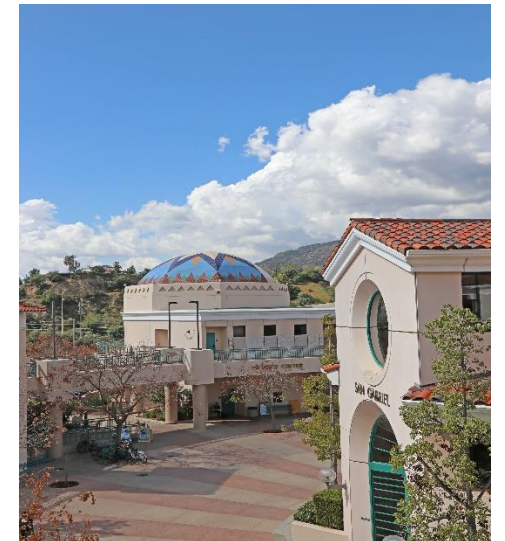
Ready and Able

Effect on Students



Enrollment headcount

- ▶ Spring 2020 - 17,398 (down 3.8%)
- ▶ Fall 2020 – 16,500 (down about 5%)



Ready and Able

Effect on Students



- Federal CARES Act - \$5M emergency grants for students
- Spring 2020 - 5,168 eligible students got \$625 each (\$3.2M)
- Fall 2020 – need based distribution of \$1,000 or less (\$1.8M) to approximately 2,000 students whose financial hardship threatens continuation at GCC



Ready and Able

Effect on Staff



GLENDALE COMMUNITY COLLEGE
STAYINGCONNECTED

- Remote work for most
- Professional development
- Collective bargaining MOUs
- Communication
- Mental health



Ready and Able

Fiscal Effect on District

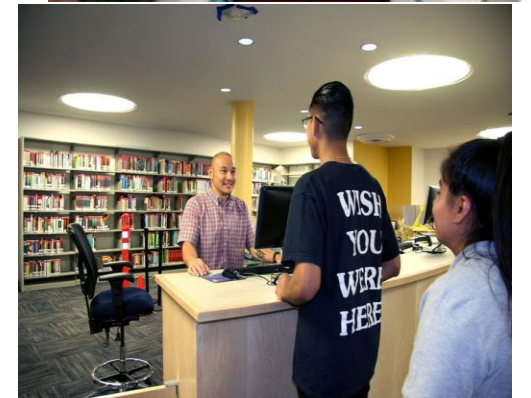
- Federal CARES Act (+\$5M)
- State budget cuts (-\$3M)
- Loss of local revenue (-\$4.7M)
- Past years of deficit spending
- Accreditation “enhanced fiscal monitoring”



Ready and Able Reopening Requirements



- COVID-19 prevention plan – work areas, student areas, areas of congregation
- Healthy hygiene practices promoted
- Frequent cleaning, disinfection, and ventilation
- Distancing on campus – seating at least six feet apart, limited communal spaces, food services delivery
- Staff and student training on prevention
- Protocols when someone becomes ill



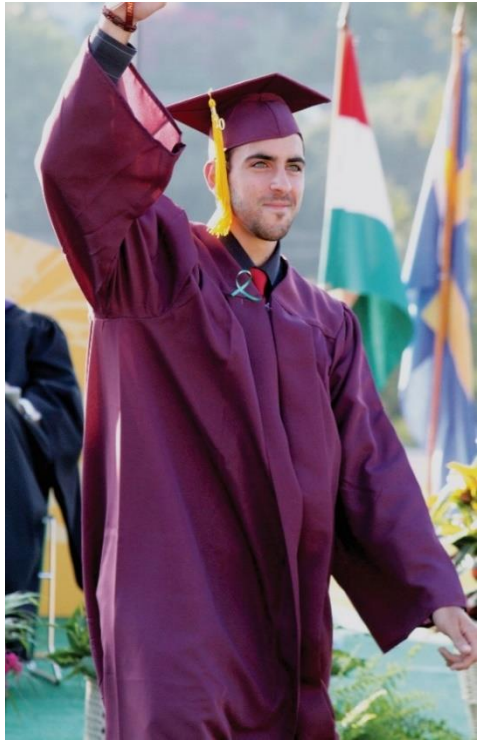
Ready and Able

Priorities for 2020-2021



- ▶ **Pandemic**
- ▶ **Access, equity, diversity and inclusion**
- ▶ **Balanced budget**
- ▶ **Student basic needs**
- ▶ **Anti-racism and anti-bias**
- ▶ **CTE needs of unemployed**
- ▶ **Guided Pathways**
- ▶ **Energy conservation**
- ▶ **System goals alignment**
- ▶ **Facilities Improvements**

Ready and Able to Show Hope in Action



Defining Hope

- a feeling of expectation and desire for something to happen
- someone or something that may be able to provide help



Ready and Able to Show Hope in Action

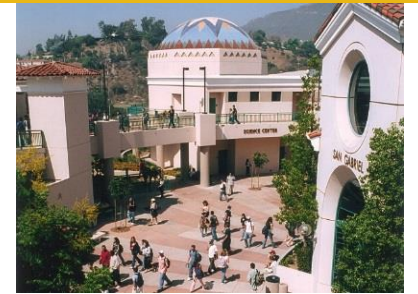


Remember our vision?

GCC aspires to be the Greater Los Angeles
Region's premier learning community where

ALL STUDENTS

achieve their informed educational goals ...



Ready and Able



Thank you for a job well-done

