



Glendale Community College
ELLADA MELOYAN

PORTFOLIO

ELLADA MELOYAN
2020-2022



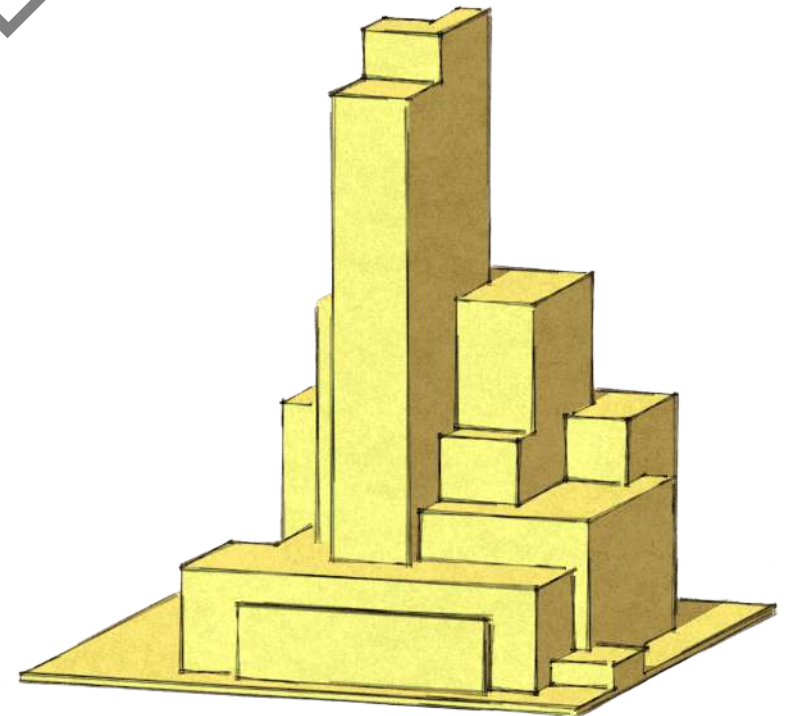
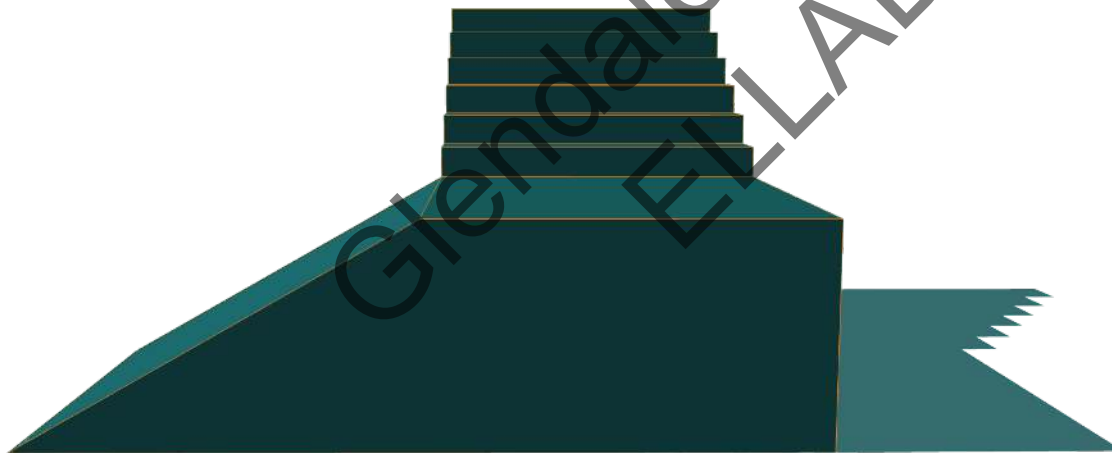
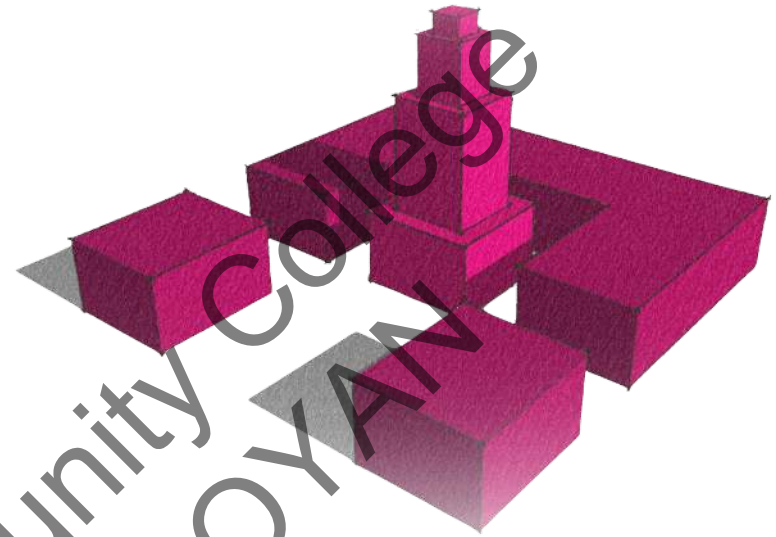
ARCHITECTURE 105

BY: ELLADA MELOYAN

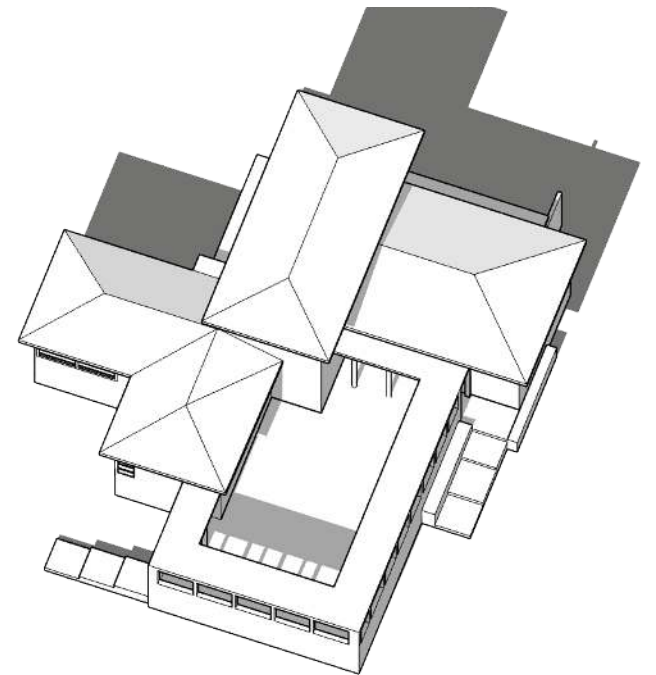
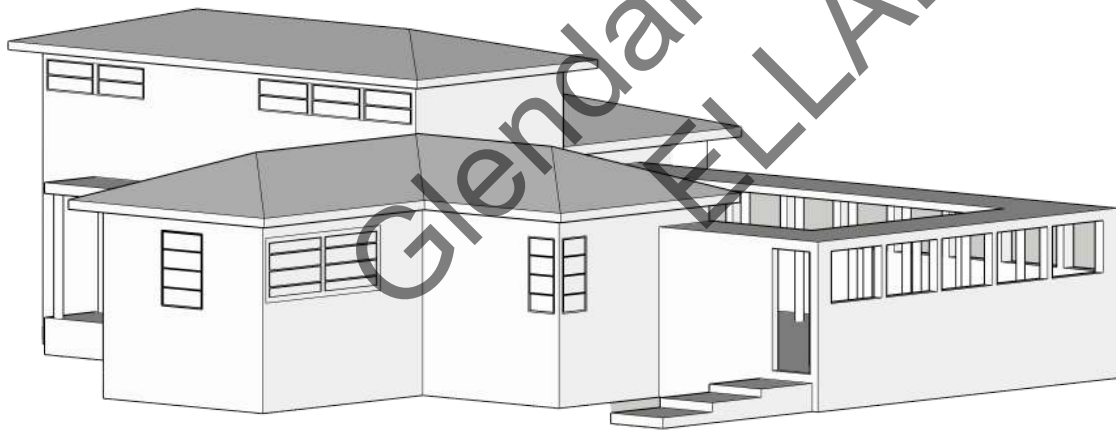
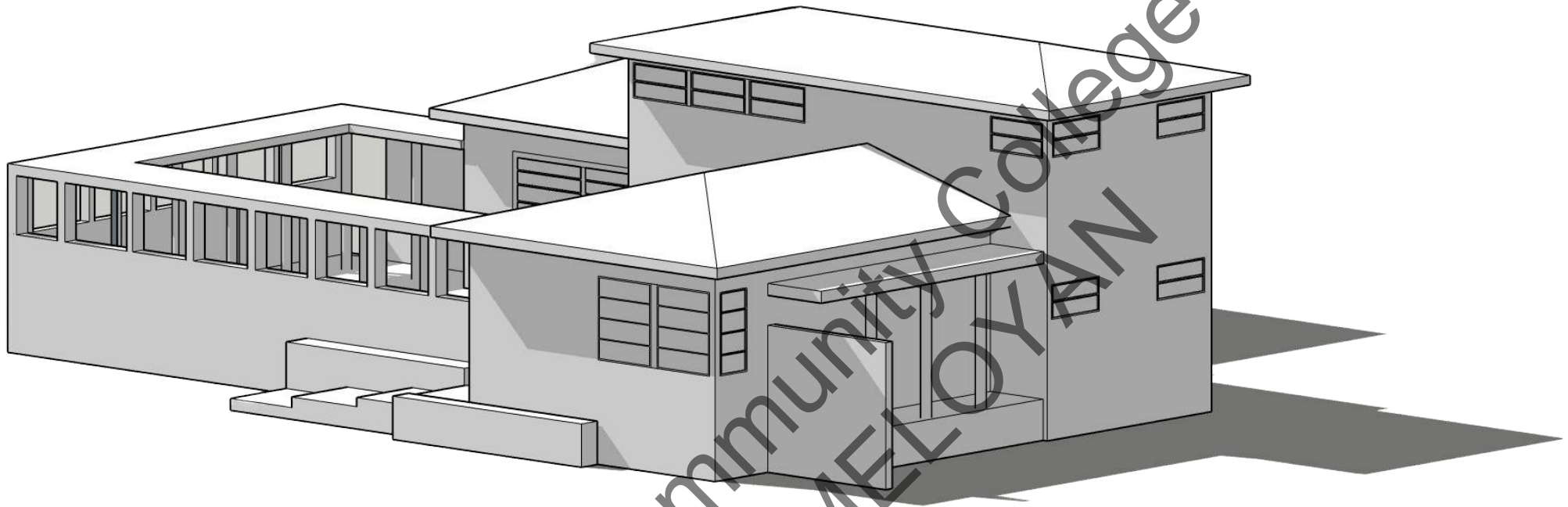
INSTRUCTOR: DAVE MARTIN

SOFTWARE: SKETCHUP AND RHINO.

ABOUT: CREATING DIFFERENT OBJECTS TO LEARN HOW TO USE SKETCHUP AND RHINO. MEANWHILE, THESE EXERCISES ALSO GIVES US THE OPPORTUNITY TO LEARN ABOUT CREATING 3D OBJECTS AND IT ALLOWS US TO USE OUR IMAGINATION.



LEARNING TO CREATE DIFFERENT SHAPES ON SKETCHUP WITH DIFFERENT SCENES.



DOING MORE ADVANCED PROJECTS.



3





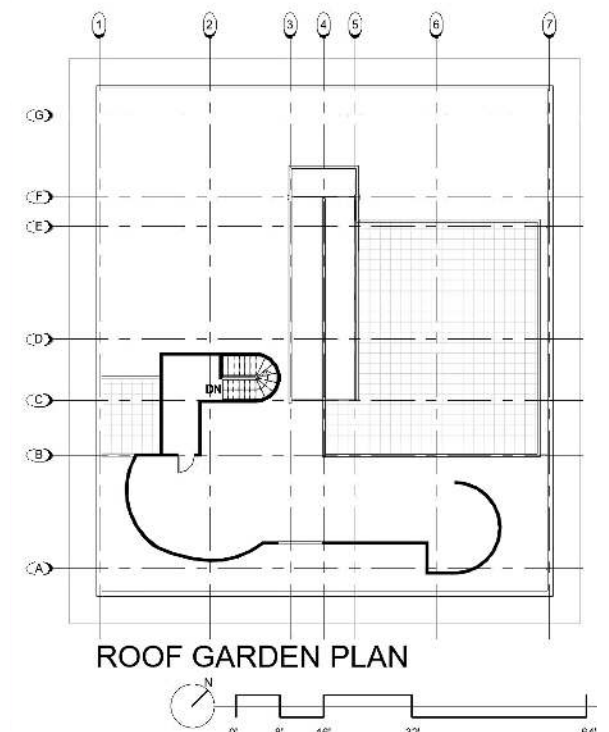
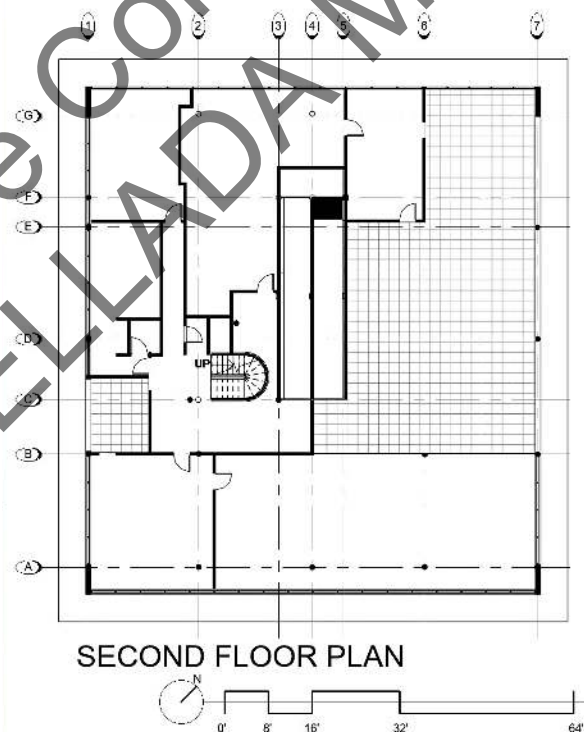
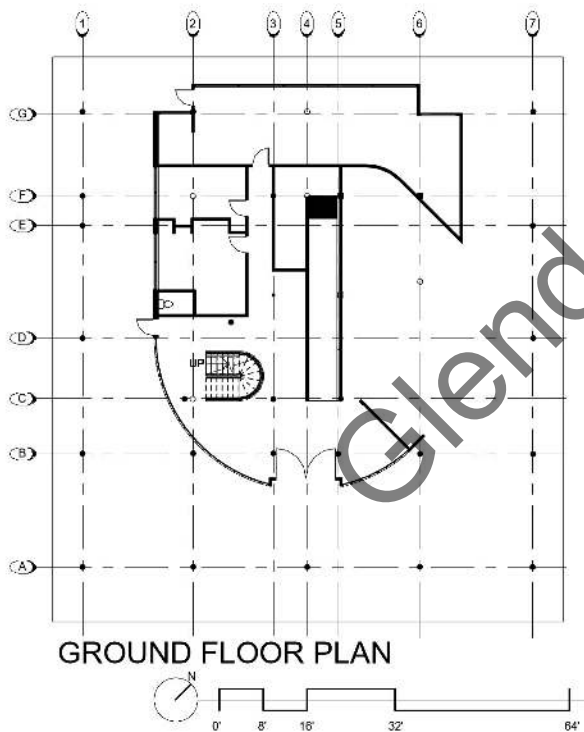
ARCHITECTURE 120

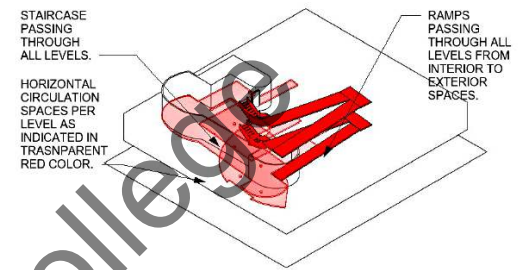
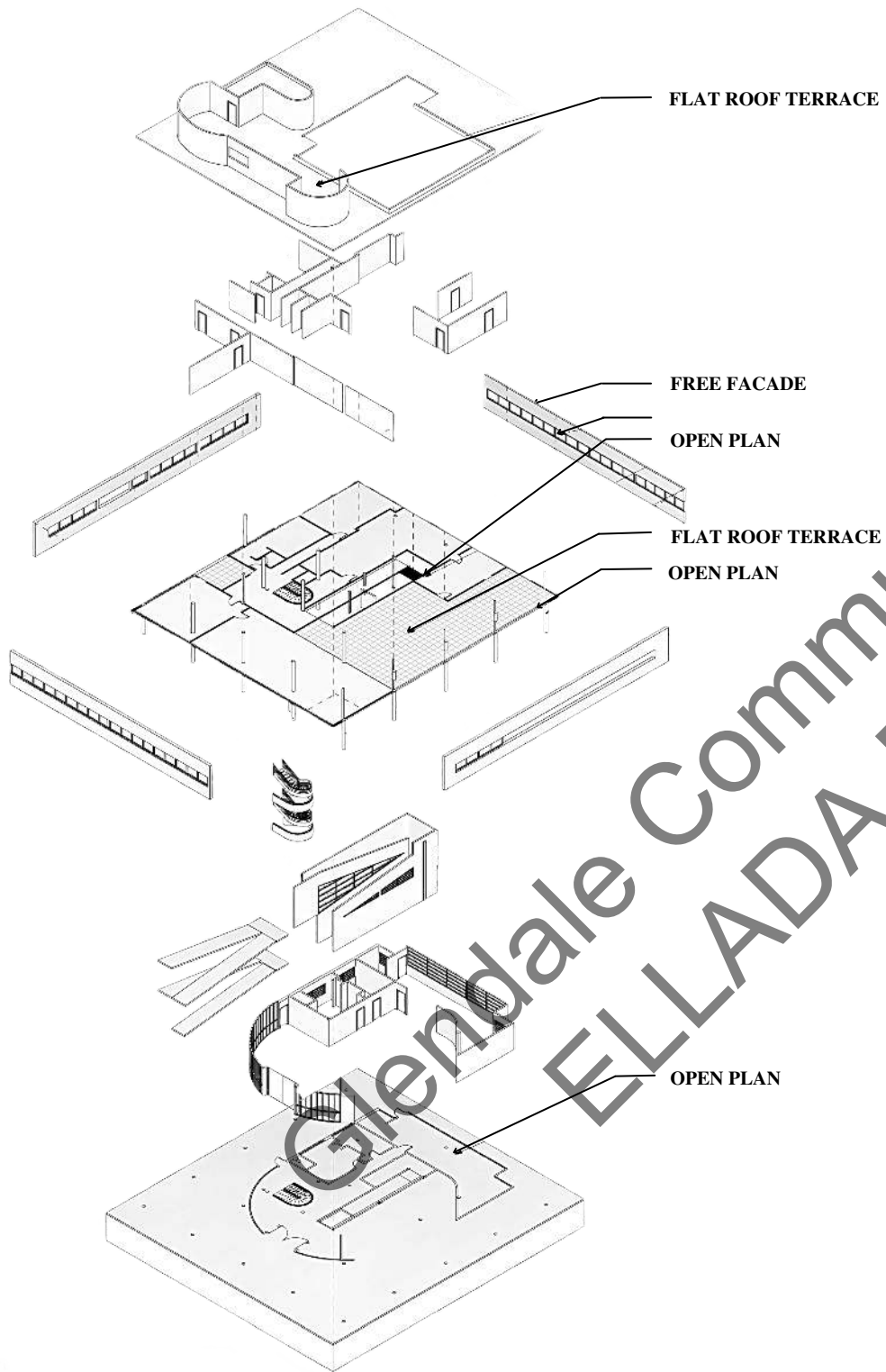
VILLA SAVOYE

BY: ELLADA MELOYAN
INSTRUCTOR: PAUL CHIU
SOFTWARE: REVIT, AUTOCAD,
TWINMOTION.
ABOUT: BUILDING THE FAMOUS
VILLA SAVOYE THAT WAS
ORIGINATED FROM FRANCE.

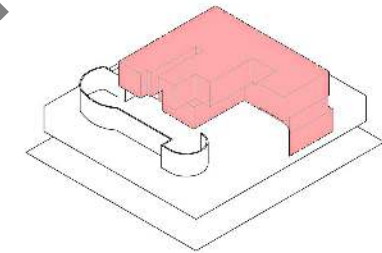


5



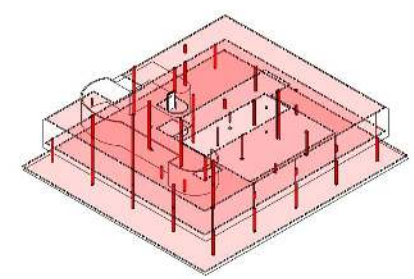


■ VERTICAL CIRCULATION - STAIRS AND RAMPS
■ HORIZONTAL CIRCULATION PER FLOOR
PROGRAM DIAGRAM

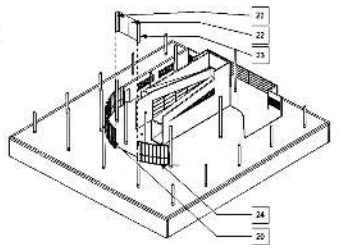
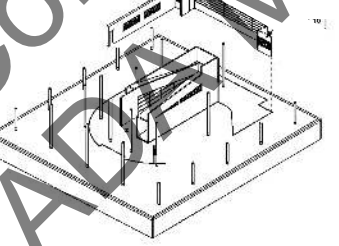
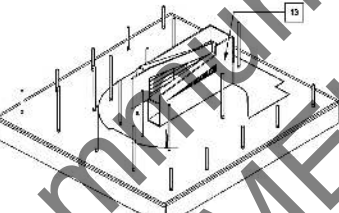
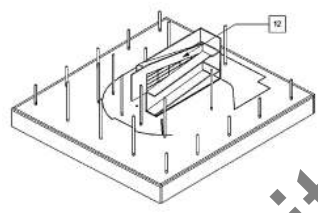
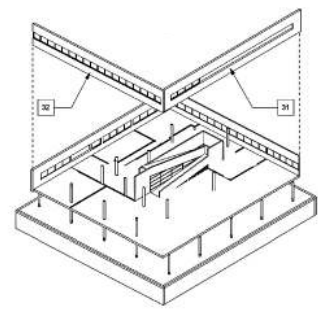
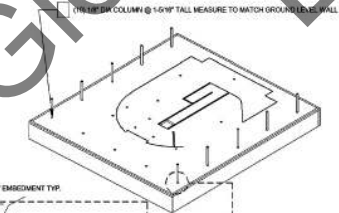
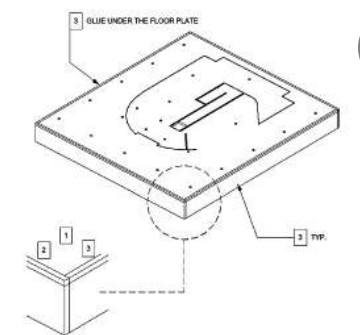
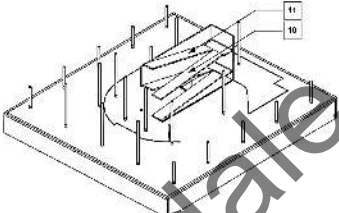
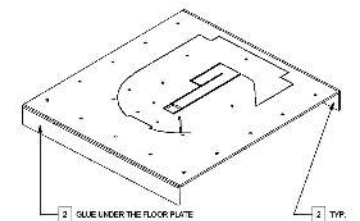
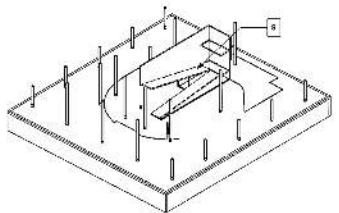
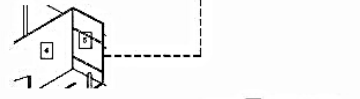
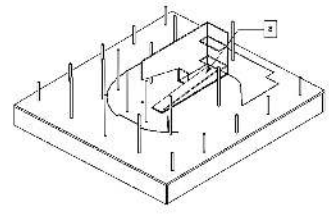
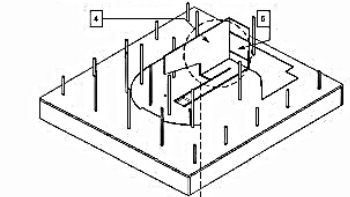
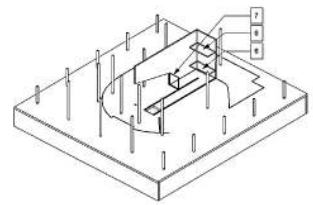
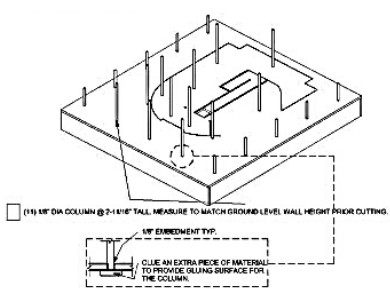


■ INDICATED AS PRIVATE PROGRAMS - BEDROOMS AND BATHROOMS
 INDICATED AS PUBLIC PROGRAMS - PARKING, KITCHEN, LIVING ROOMS, GARDENS

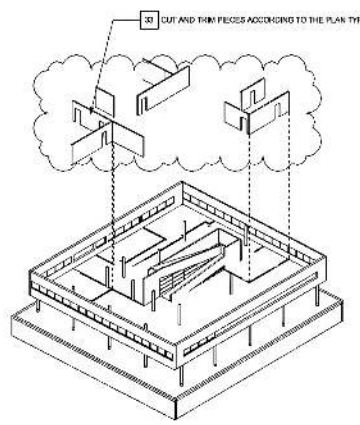
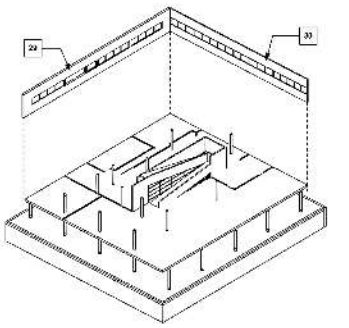
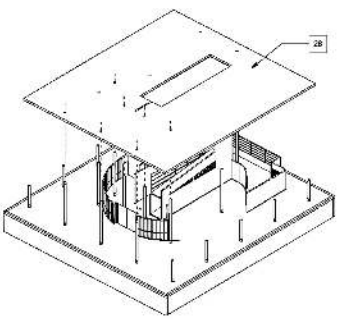
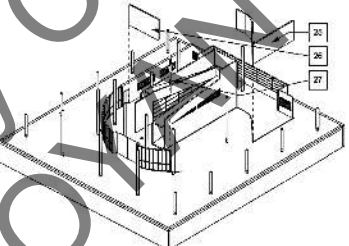
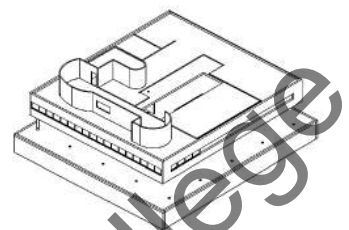
STRUCTURAL DIAGRAM



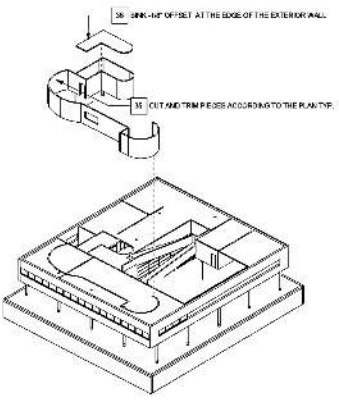
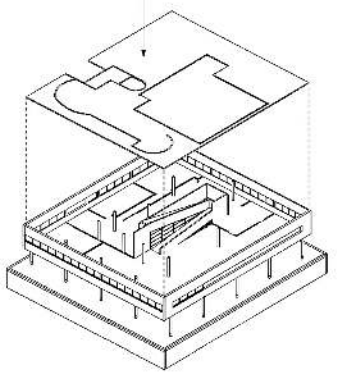
■ VERTICAL STRUCTURAL SUPPORT - COLUMNS
■ HORIZONTAL STRUCTURAL SUPPORT - BEAMS AND FLOOR PLATES



ALL CURVED OBJECTS NEED TO BE WETTED AND BEND ACCORDING TO THE SCORED MARKS ON THE MODEL.



31 SPIN THE FLOOR TO ATTACH THE SECOND FLOOR WALL OR 1/4" OFFSET AT THE EDGE OF THE EXTERIOR WALL.



A HOUSE FOR BEATRICE VIO

**SOFTWARE: REVIT, TWINMOTION,
INDESIGN.**

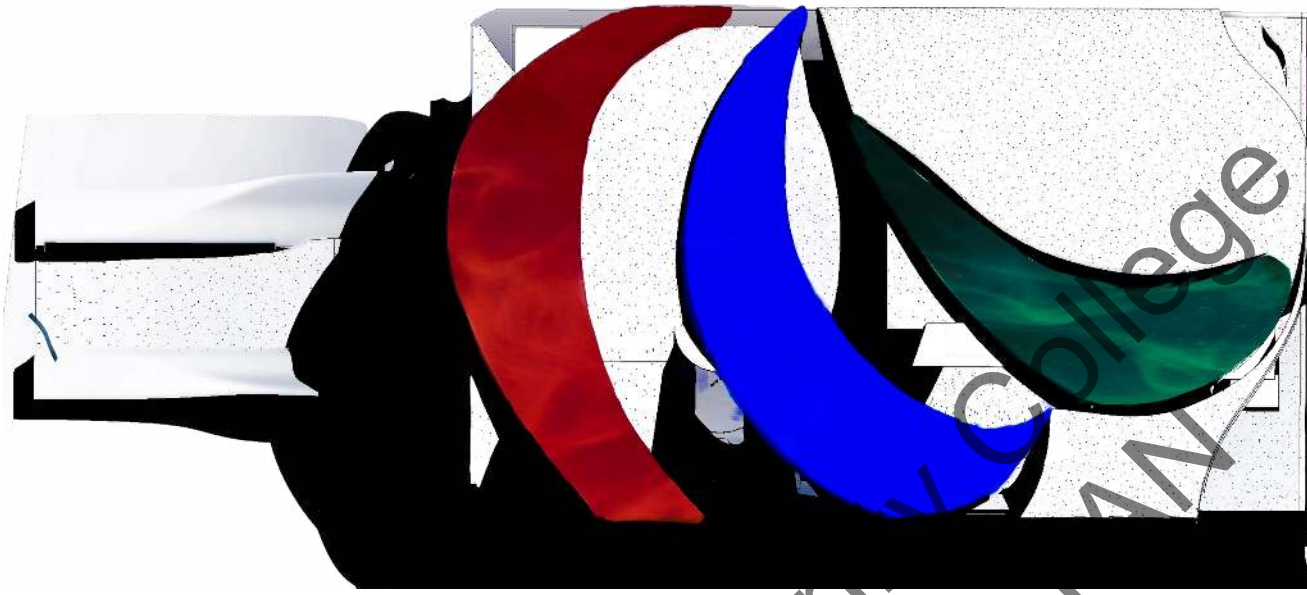
**ABOUT: FOR THIS ASSIGNMENT WE HAD
TO WATCH THE MOVIE CALLED
"RISING PHOENIX" WHICH IS ABOUT 9
CHARACTERS THAT WERE PART OF
THE PARALYMPIC GAMES.**

**FURTHERMORE, WE HAD TO CHOOSE
ONE PERSON AND BUILD A HOUSE FOR
THEM. I CHOSE BEATRICE VIO WHO'S
AN ITALIAN WHEELCHAIR FENCER,
THAT LOST AT A YOUNG AGE HALF OF
HER ARMS AND LEGS DUE TO
MENINGITIS. MOREOVER, SHE STILL
BECAME A GOLD MEDAL WINNER FOR
TOKYO PARALYMPIC GAMES IN 2020.**

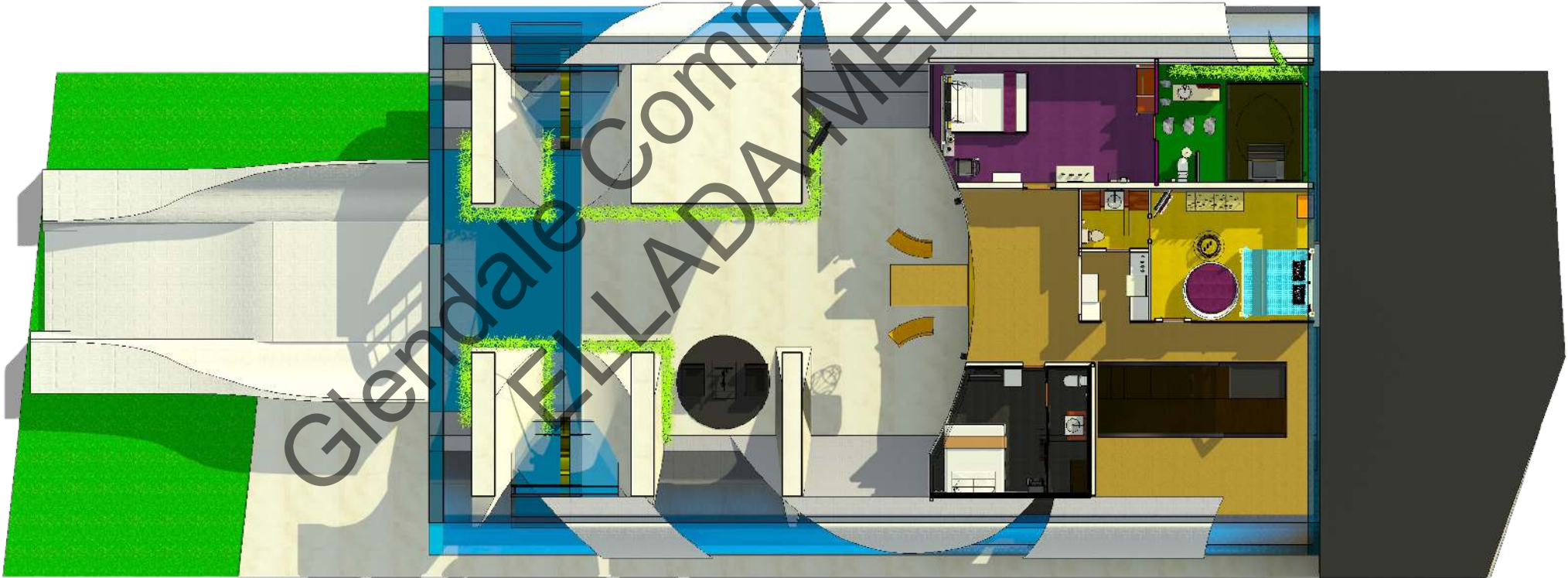
**LASTLY, MY HOUSE IS MADE AS AN
MUSEUM TO HONOR HER LIFE AND
SHOW THE DIFFERENT STAGES
OF HER LIFE.**

**THE ADDRESS OF THE SITE:
708. EAST PALMER AVENUE,
GLENDALE, CA.**

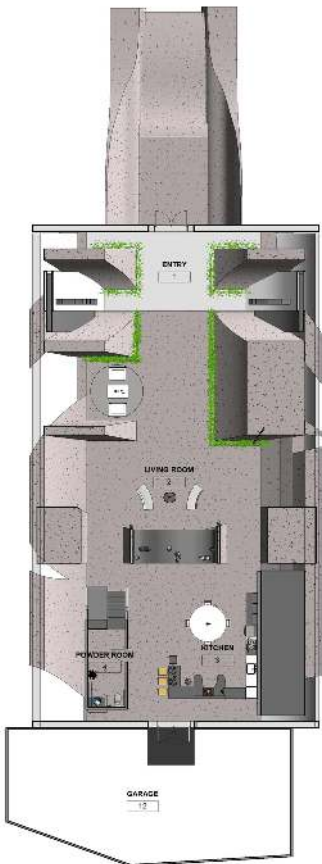




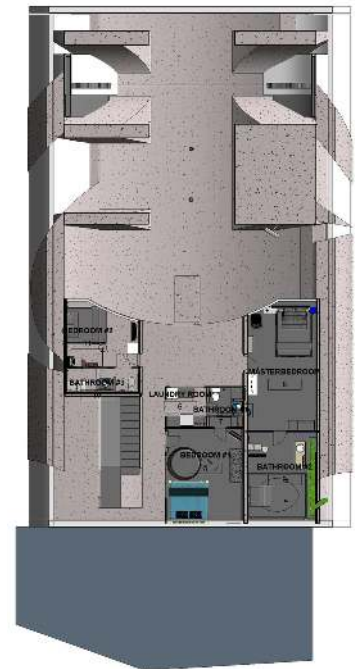
THE SYMBOL OF THE PARALYMPIC FLAG.



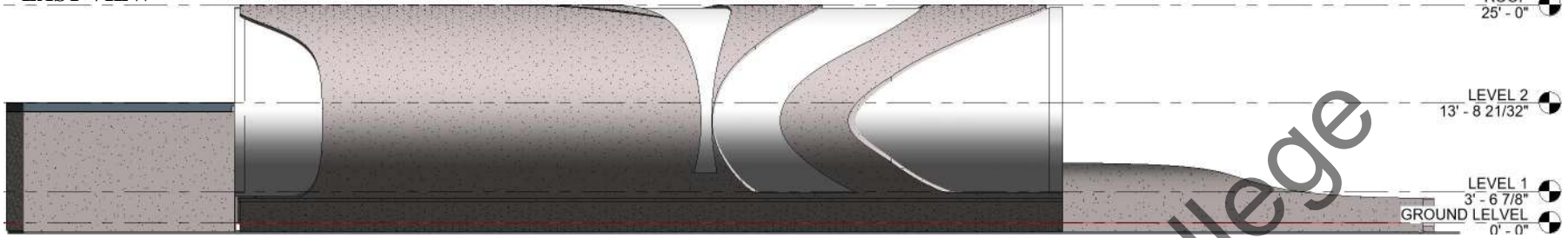
GROUND FLOOR



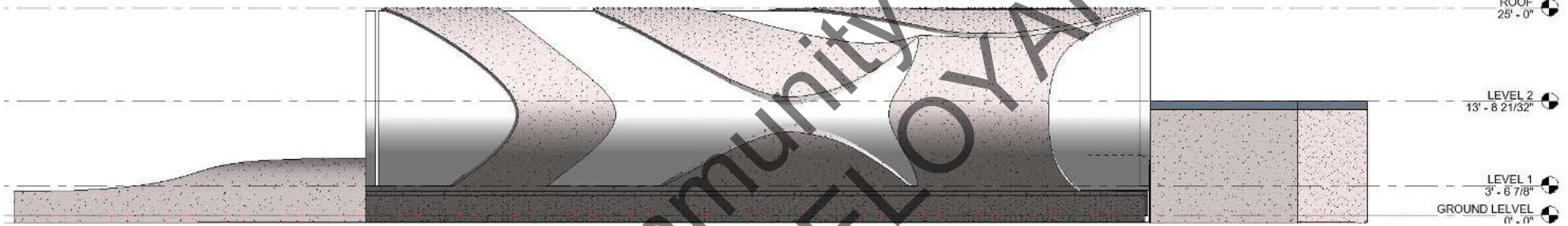
LEVEL 1



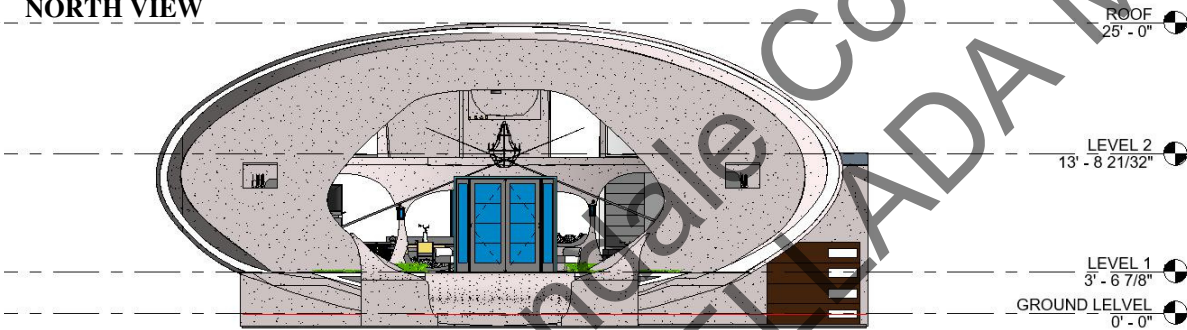
EAST VIEW



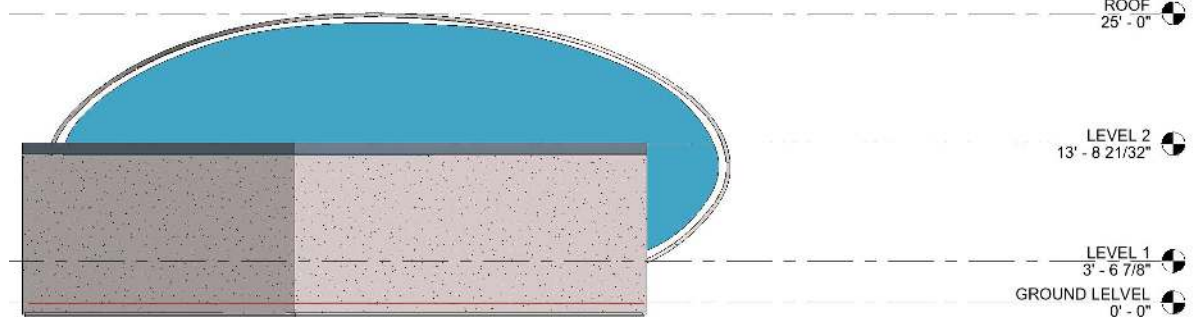
WEST VIEW



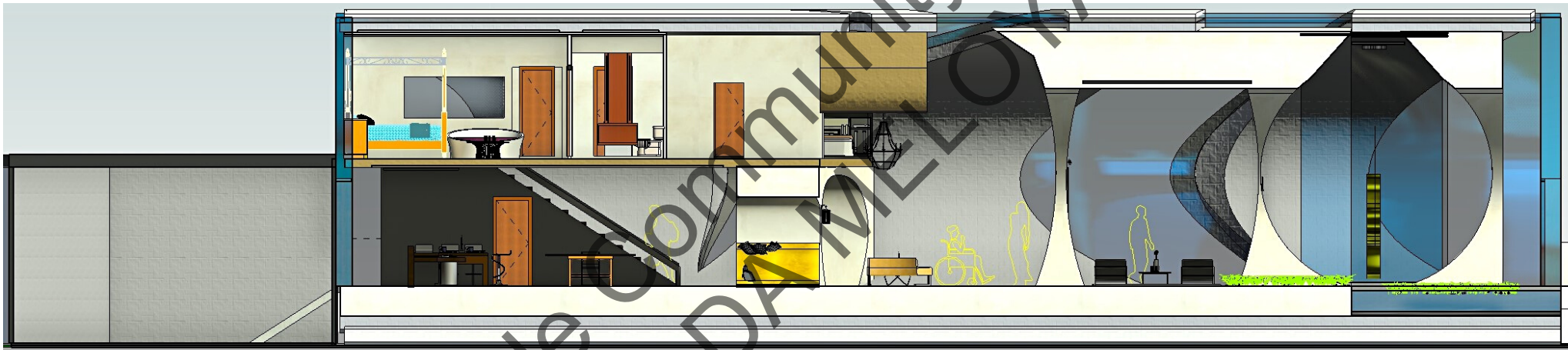
11 NORTH VIEW



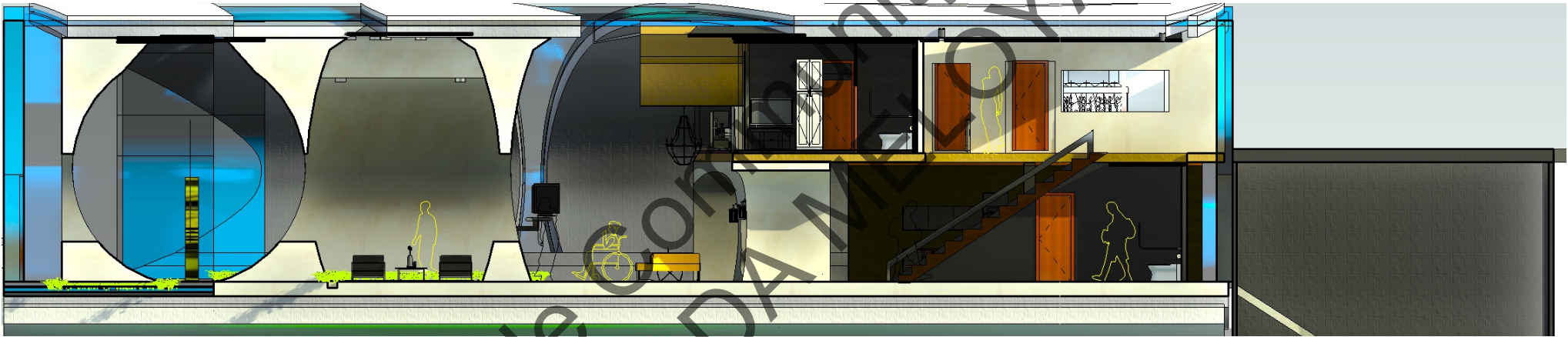
SOUTH VIEW



Glendale Community College
ELLADRA MELLOKIAN



EAST SECTION CUT.



Glendale Community College
ELLADAM ELOKAN

WEST SECTION CUT.





LIVING ROOM SECTION CUT VIEW BY TWINMOTION.



THE KITCHEN DESIGNED FOR WHEELCHAIRED PERSON.



SECTION CUT VIEW OF THE BATHROOM.

ARCHITECTURE

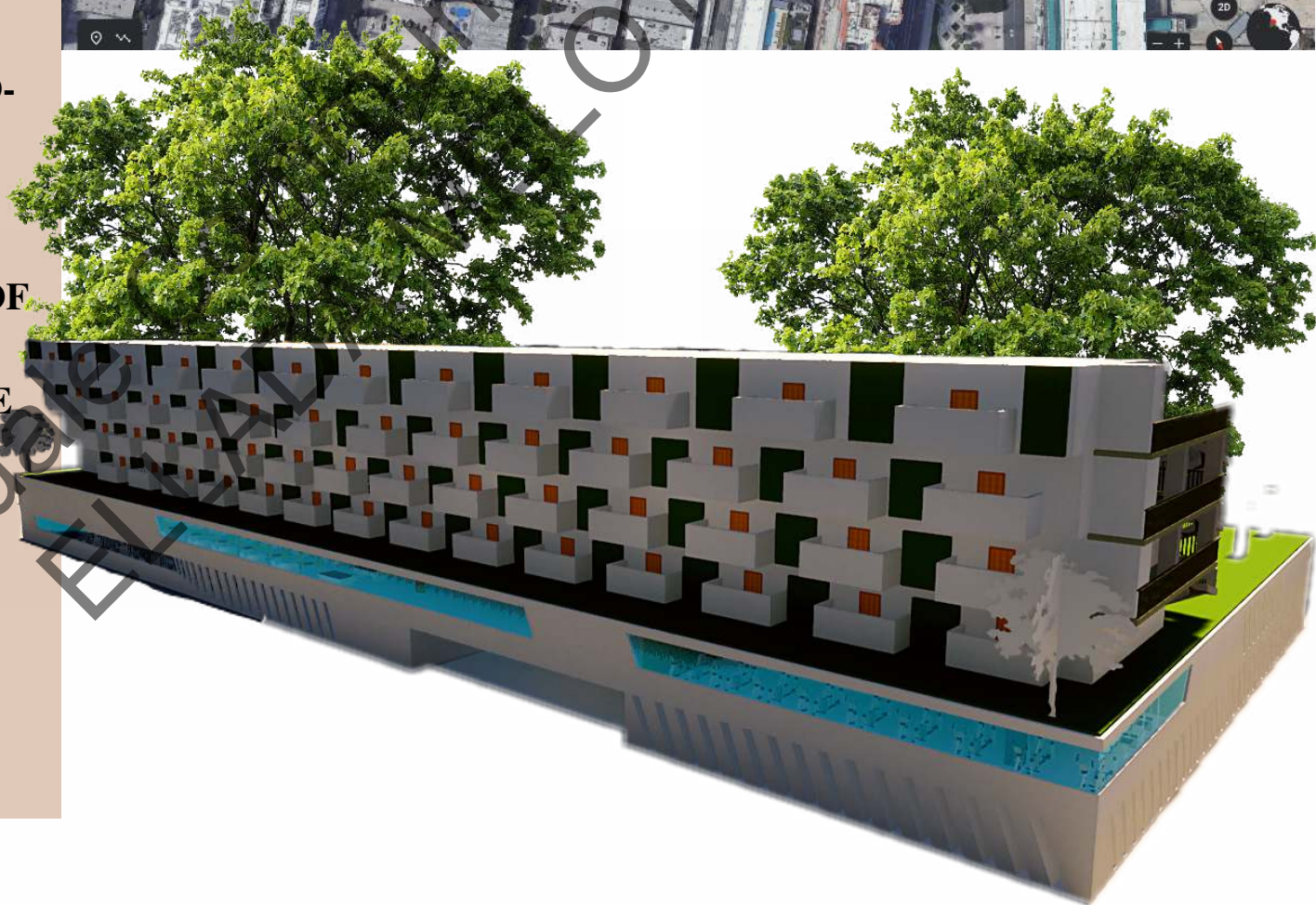
125 SENIOR HOUSING

BY: ELLADA MELOYAN

INSTRUCTOR: PAUL CHIU

SOFTWARE: REVIT, TWINMOTION.

ABOUT: IN THIS CLASS WE WERE ASSIGNED TO BUILD A HOUSE FOR SENIORS. THE STRUCTURE INCLUDES A TWO-LEVEL UNDERGROUND PARKING FOR 200 PEOPLE. IT ALSO HAS FIFTY-THREE BEDROOMS FROM WHICH 36 OF THEM ARE ONE-BEDROOM, 16 ARE TWO-BEDROOM, AND ONE IS 1 BEDROOM. LASTLY, THE WHOLE STRUCTURE IS BUILT SO THAT IT'S FULLY COMFORTABLE AND ACCESSIBLE FOR OLDER PEOPLE.



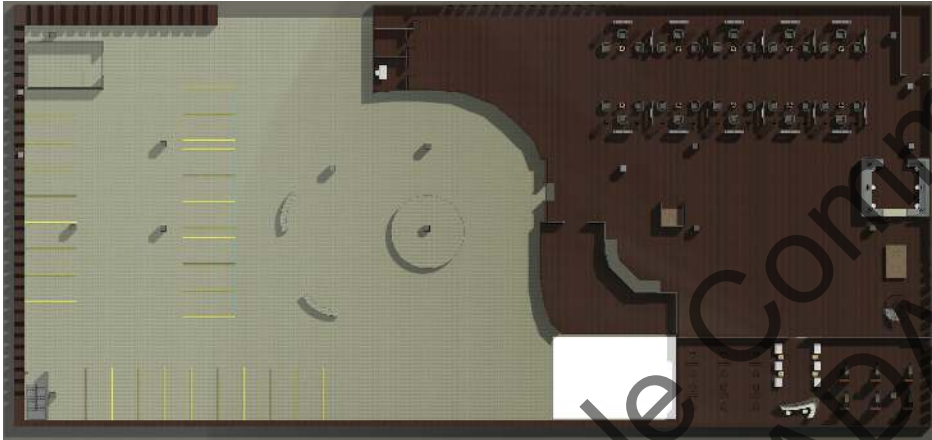
LEVEL 2



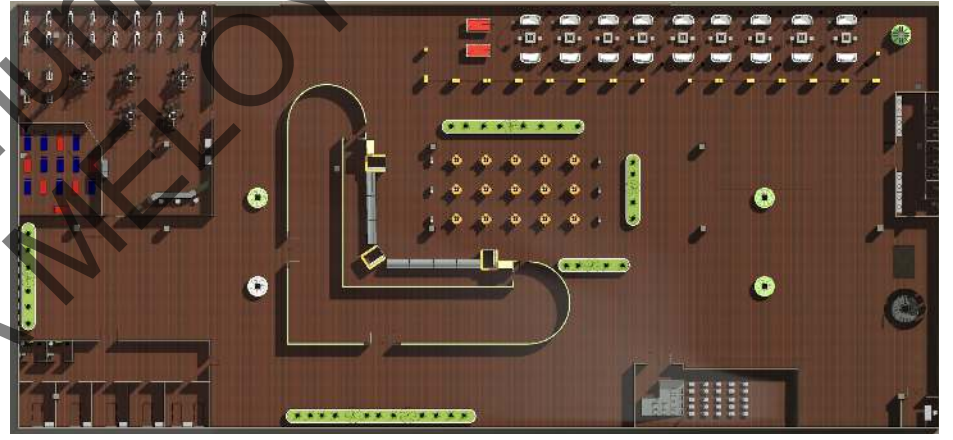
LEVEL 3



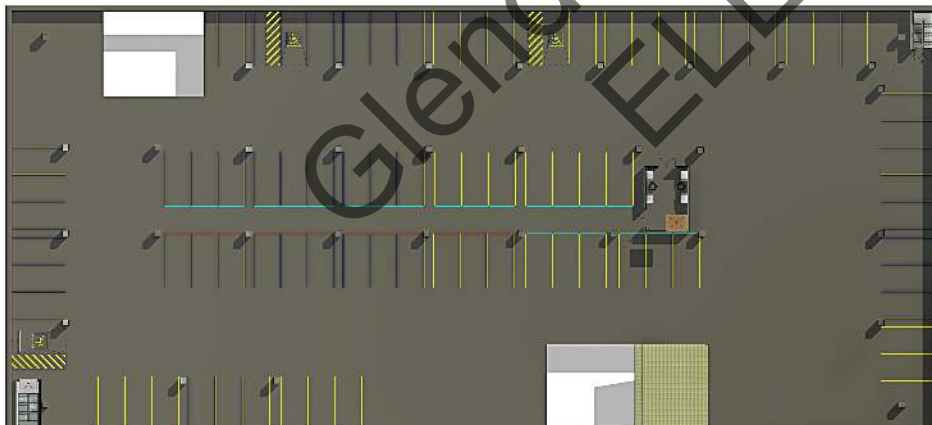
GROUND LEVEL



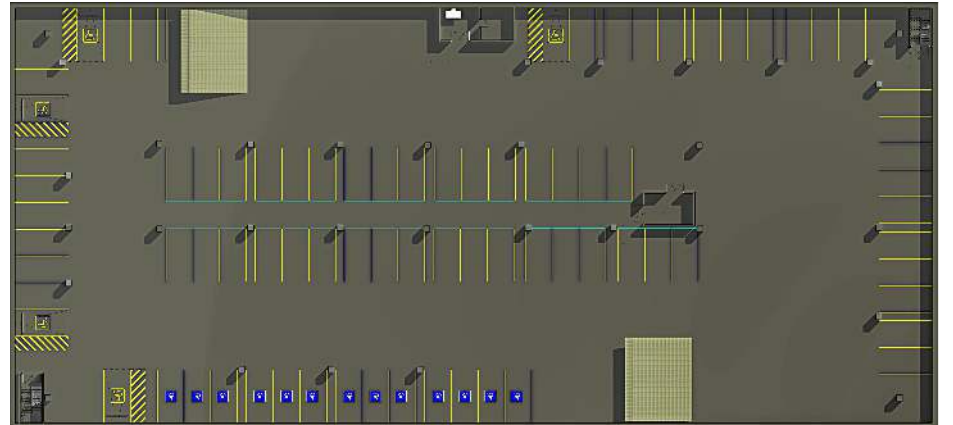
LEVEL 1



UNDERGROUND PARKING LEVEL 1



UNDERGROUND PARKING LEVEL 2



LEVEL 4



LEVEL 5

20



NORTH VIEW

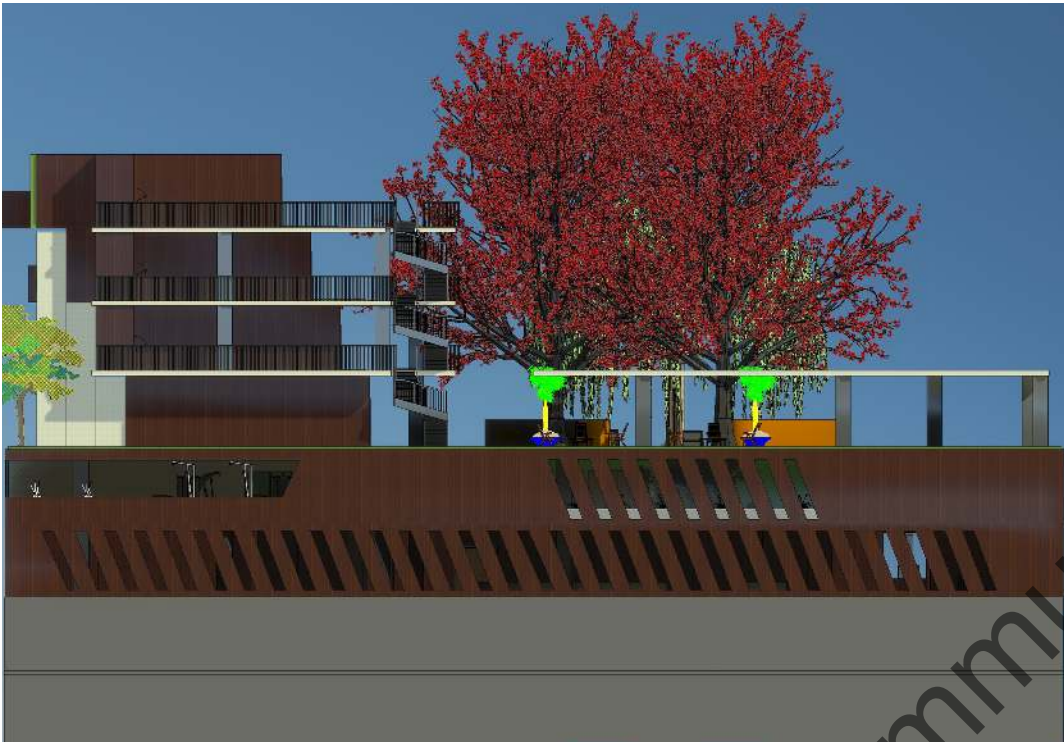


21

SOUTH VIEW



WEST VIEW



EAST VIEW 22



Glendale Community College
ELLADA MELOYAN

Glendale Community College
ELLADAN



NORTH SECTION CUT.

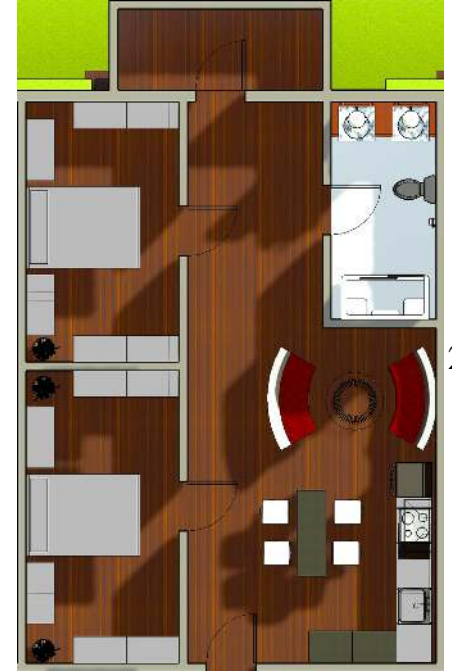
THREE BEDROOM UNIT

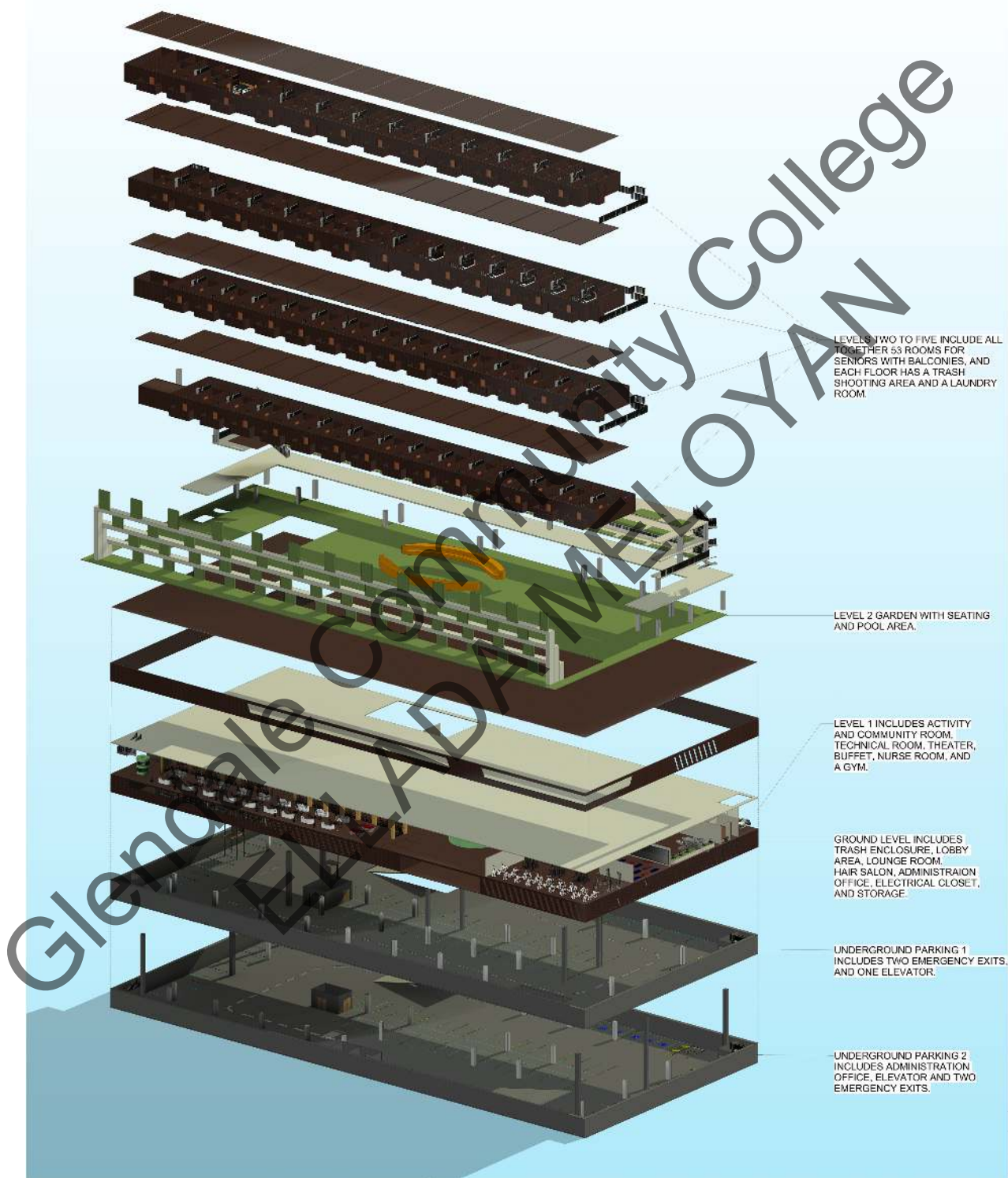


ONE BEDROOM UNIT



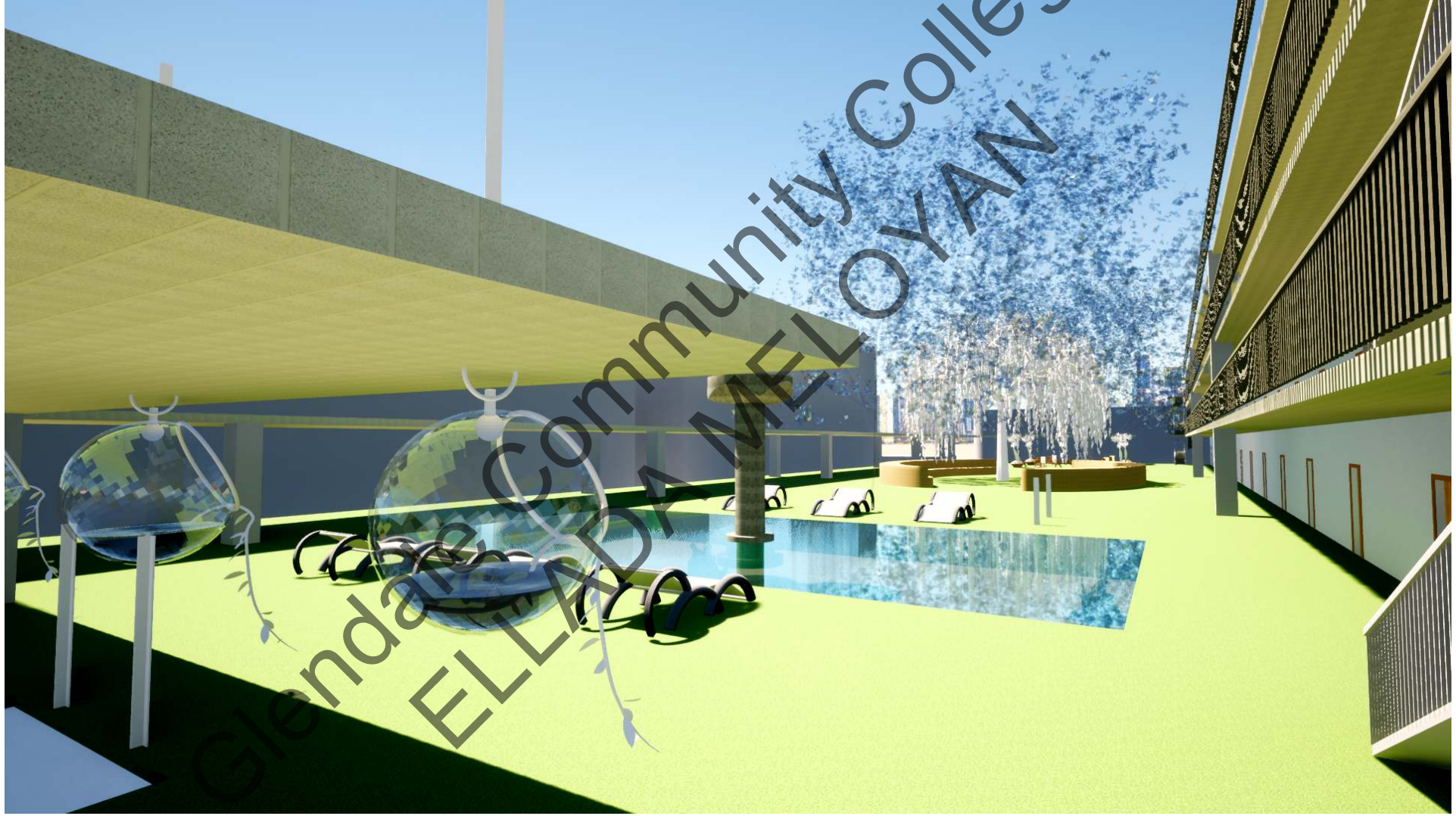
TWO BEDROOM UNIT





EXPLODED VIEW DIAGRAM.



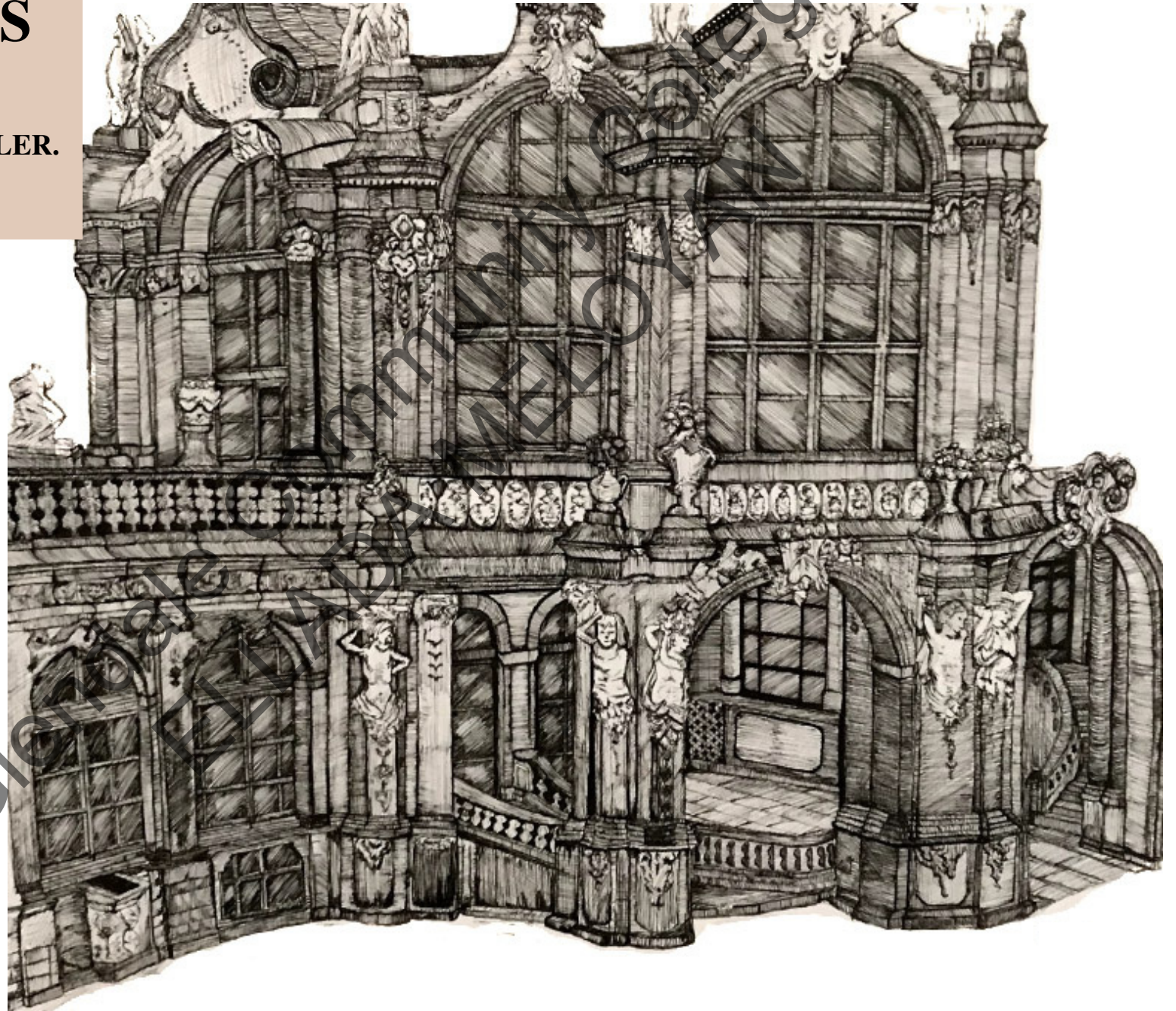


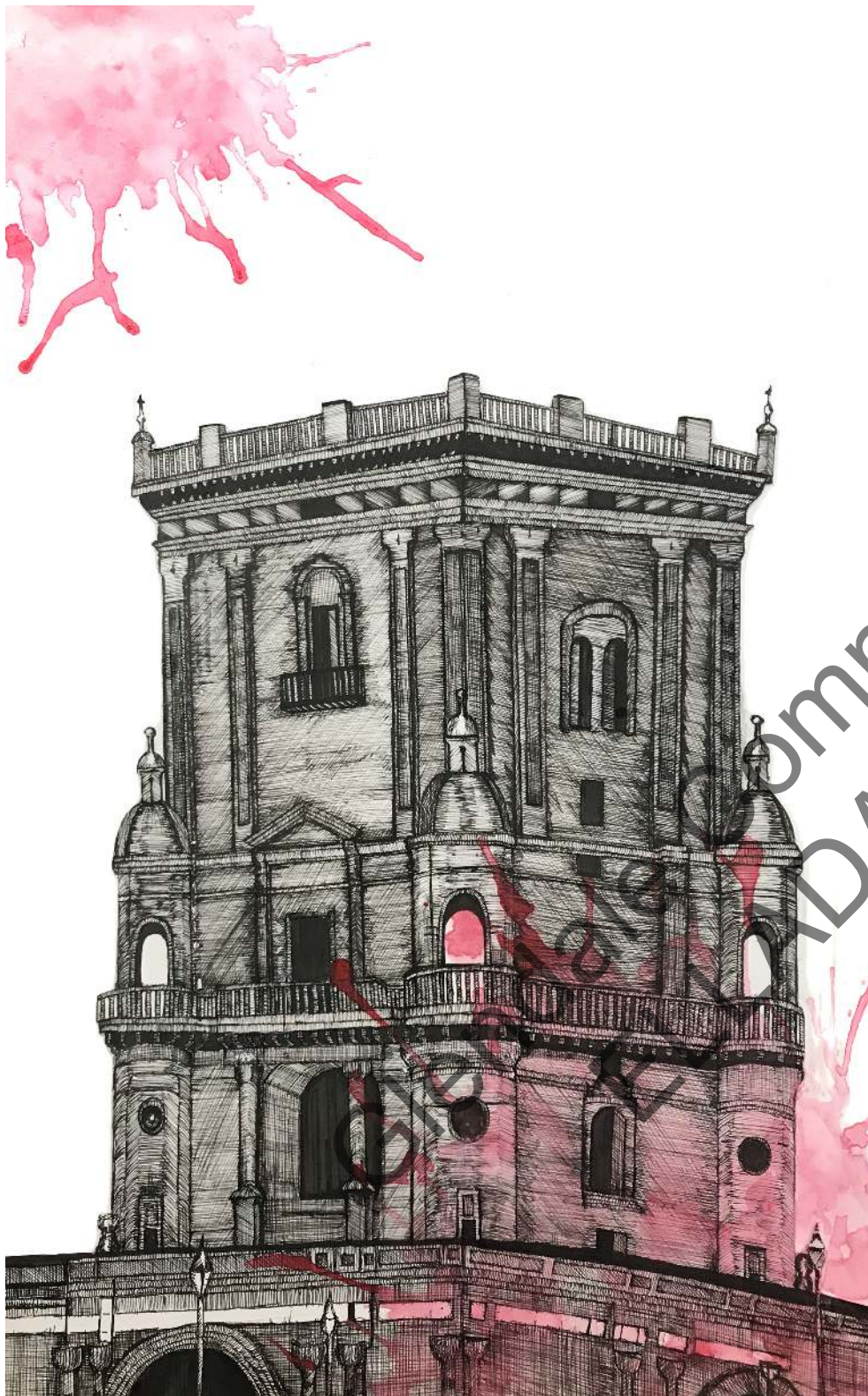
ELLAIDA MELOYAN
Secondary Community College



HAND AND DIGITAL DRAWINGS

BY: ELLADA MELOYAN
MATERIAL: PEN, NO RULER.
LOCATION: ZWINGER
PALACE, IN GERMANY.





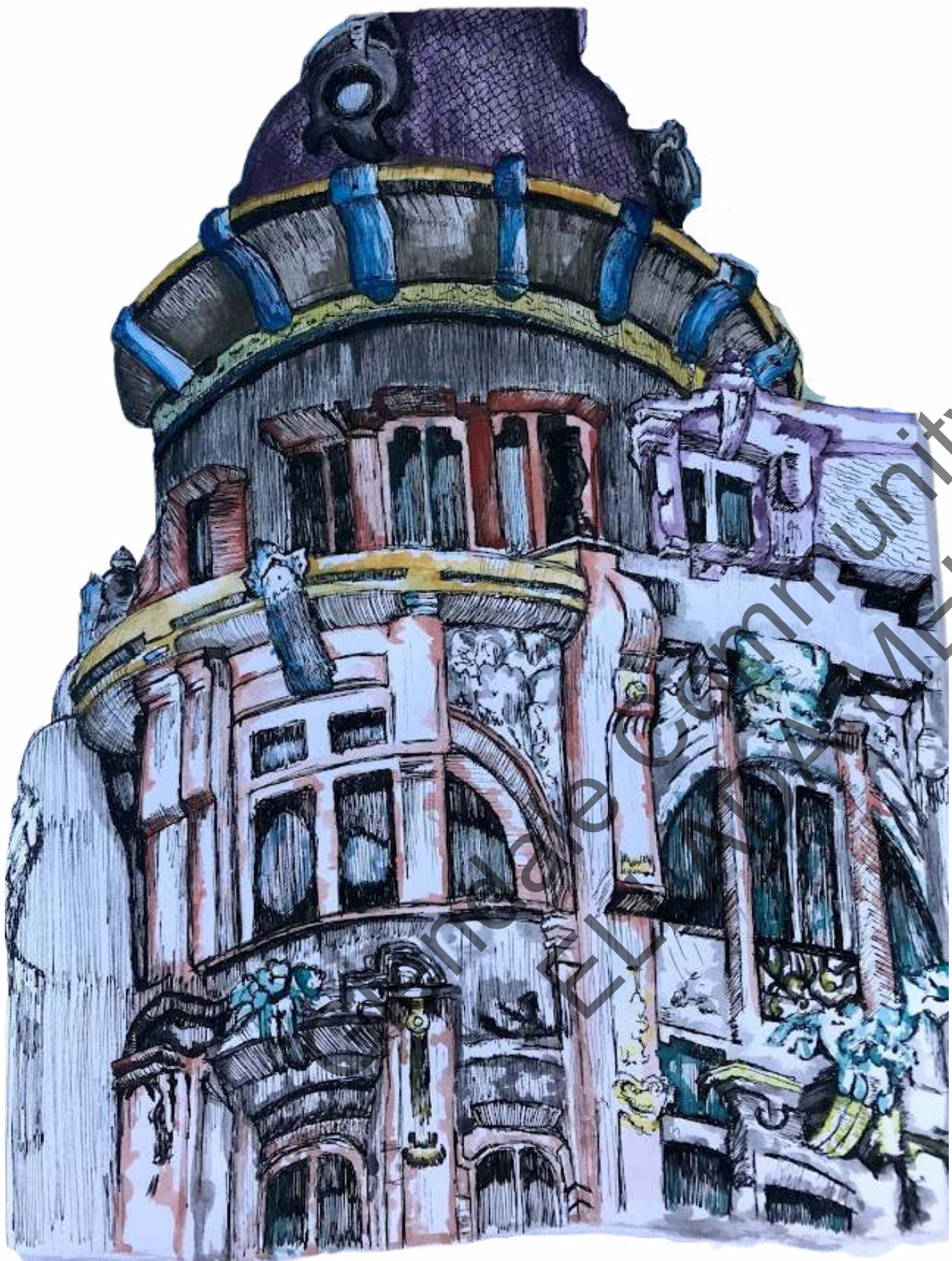
Community College
DA MELOYAN

MATERIAL: PEN AND RED WATERCOLOR.

Gleisdale Community College
YAN

MATERIAL: PEN
LOCATION:
BROCKENHURST PARK,
GATE HOUSE,
HAMPSHIRE.

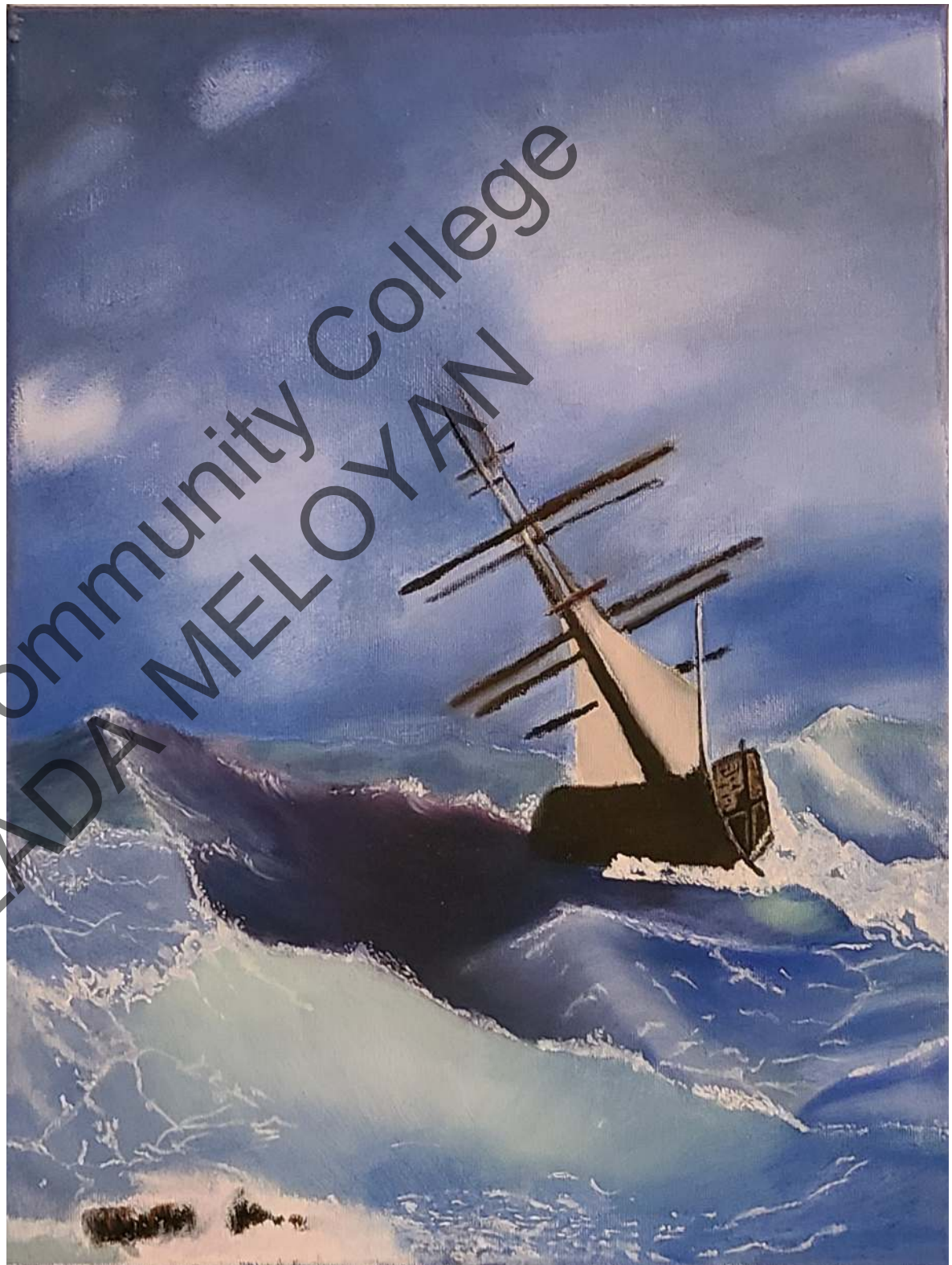




Community College
MELLOYAN

**MATERIAL: PEN
AND WATERCOLOR.**

Glendale Community College
ELLADA MELOYAN



**MATERIAL: OIL PAINTING ON CANVAS.
INSPIRATION FROM HOVHANNES
AIVAZOVSKY.**



**MATERIAL: OIL
PAINTING ON
CANVAS.
LOCATION:
MULTNOMAH
FALLS, UNITED
STATES,
OREGON.**

Glendale C
ELI

**MATERIAL: ACRYLIC PAINTING ON CANVAS.
ABOUT: A PORTRAIT OF BILLIE EILISH.**



THANK YOU!

Glendale Community College
ELLADA MELOYAN