



Counselor Day 2024

Wednesday, November 13th



- 1 Welcome & Housekeeping
- 2 GCC Campus Updates
- 3 Showcases & Demonstrations
- 4 Lunch & Student Panel
- 5 Optional Campus Tour



General Housekeeping for the Day...

- Wifi: GCC Wireless
- Restrooms
- Wristbands
- Resource Booklet
- Landing Page w/ QR Code



Counselor Day 2024

GCC Programs & College Highlights



glendale.edu/HSCounselors



Icebreaker...

- Teams by Color
- Your wristband color is your buzzer
- Players from the winning team will enter a raffle for a \$50 Amazon gift card





High School Slang Trivia



SLAY





To do something exceptionally well; to impress.

Slay

MOOD

On a scale of Cat, how are you feeling today?





Used to agree with or relate to something strongly; “That’s a mood” means you feel the same way.



Agreement or confirmation, like saying
“okay” or “you got it.”



RECEIPTS



Evidence or proof, typically in the form of screenshots or saved messages.



DRIP





Stylish or impressive outfit or
appearance



BUSSIN'



Something really good, especially food
that tastes amazing.



DEAD



A reaction to something hilarious or unbelievable, meaning “I’m dying of laughter.”



**Sayless
Fam I Got
You**

SAY LESS



Acknowledgment that you understand
and agree, no further explanation
needed.



NO CAP



Telling the truth, no lie or exaggeration.



IYKYK





“If you know, you know,” meaning something only those in the know will understand.



MAIN CHARACTER



The idea of being the protagonist of one's own life, often with confidence or drama.

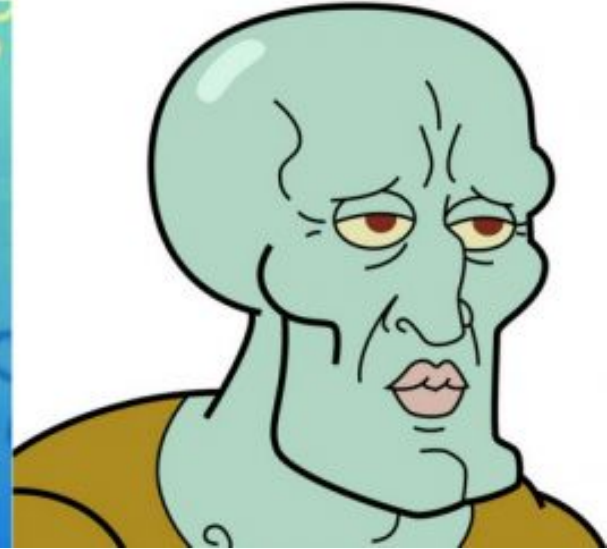


GLOW UP

Squidward
Before Chemical Peel



Squidward
After Chemical Peel



A transformation to look or feel better,
often after a tough time.



VIBE CHECK



A way to assess the energy or mood of a person or situation.



STAN



To strongly support or idolize someone or something, originally from the Eminem song “Stan.”



What does **high key** mean?

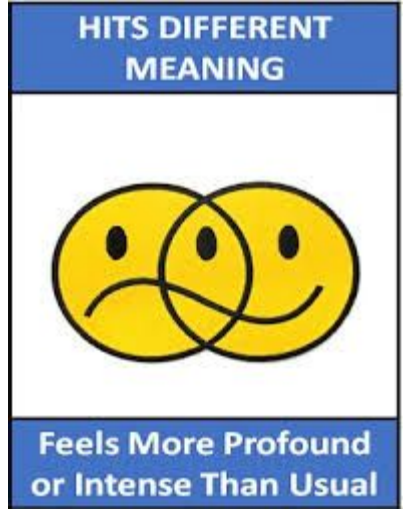
HIGHKEY



Means openly or strongly.



HITS DIFFERENT



Something that feels especially impactful or resonates in a unique way.



CHEUGY



Uncool, out of style, or trying too hard,
often referring to millennial trends.



Go Through GCC





Welcome from our Administration

Dr. Alen Andriassian

Vice President of Student Services

Dr. Ryan Cornner

President/Superintendent, Glendale Community College



Promise Plus Keys to Success

Early Engagement

- **ECAP**
Sign up now with SOS!
- **Summer Bridge**
A meaningful 1-week orientation for all
- **Counseling**
An early plan for the Fall

Sustained Engagement

- **Success Activities**
Required events, activities, experiences
- **Support**
Structured onboarding to programs (e.g. EOPS, DSPS)
- **Momentum**
Regular check-ins and reminders



Office of the President/Superintendent

Counselor Day 2024



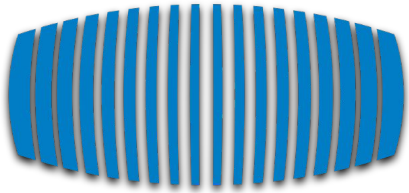
Bridge to Success...Top Transfer School

- 901 Transfers to CSUs
- 343 Transfers to UCs
- 120 Transfers to California Private Schools
- 141 Transfers to Out-of-State Colleges
- 1,505 Total Transfers



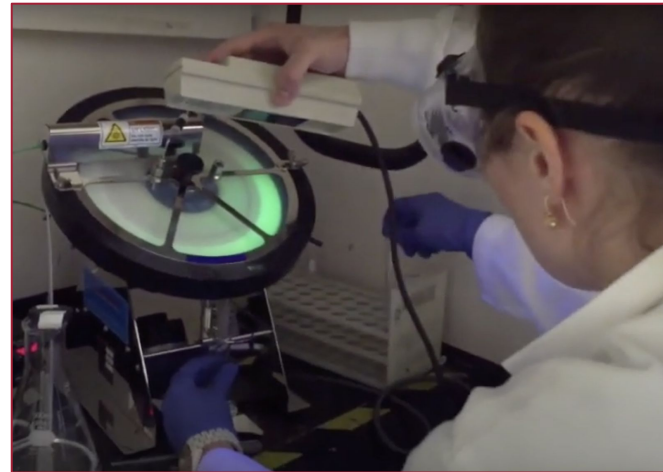


Educational Offerings...



**DREAMSCAPE
LEARN™**

Innovation



Research



Baja Program



Spotlight on Promise Plus

Campus Leadership & Student Resources



Fall 2023 Inaugural Cohort

- **Completed FAFSA/CADAA**
 - Non-Promise Plus: 52.0%
 - **Promise Plus: 81.8%**
- **Completed SEP (counseling)**
 - Non-Promise Plus: 38.9%
 - **Promise Plus: 98.5%**
- **Received a CCPG (“BOG waiver”)**
 - Non-Promise Plus: 48.1%
 - **Promise Plus: 66.9%**

- **Fall to Spring persistence**
 - Non-Promise Plus: 67.7%
 - **Promise Plus: 92.3%**
- **Fall to Fall (2024) persistence**
 - Non-Promise Plus: 48.8%
 - **Promise Plus: 80.1%**



Student Leadership Opportunities

- Associated Students (ASGCC)
- Clubs & Organizations
- Inclusion Center
- Multicultural & Community Engagement Center/Student Equity & Achievement





Timely Care...

- Supplemental Health Services in addition to our in-person Health Center
- TimelyCare is the market leader and the only telehealth
- Provider that is 100% focused on the higher education sector,
- On-demand 24/7 medical
- On-demand 24/7 “TalkNow” mental and emotional support,
- Scheduled Counseling



Financial Aid Updates



2025-2026 FAFSA/CADAA Opens December 1, 2024

- When completing college application ensure that students are reporting Social Security Number (SSN) and full first and last name as they appear on official documents. Missing or incorrect information in these fields is a common issue among new students
- We do not want students completing both FAFSA/CADAA Application
- The department will be temporarily allowing contributors without an SSN to immediately access the online 2025-2026 form after creating a StudentAid.gov account
- Identity validation process does not have to be completed prior to a contributor signing and submitting their portion of FAFSA
- All contributors with an SSN, including those with an ITIN, will need to manually enter their financial information

Financial Aid

Free Application for Federal Student Aid (FAFSA)

Who should file a FAFSA?

U.S Citizens or Permanent Resident/
Eligible non-citizen with a valid Social Security Number (Not DACA), certain designations (including refugees or those who received asylum, and T-Visa Holders.

California DREAM ACT Application (CADAA)

Who should file the CA Dream Act Application?

Undocumented students with or without DACA, U-Visa or with Temporary Protection Status (TPS).
Students must meet AB540 criteria

IMPORTANT DATES

The priority deadline expected extension of deadline for April 2nd, 2025. CSAC will work closely with the Governor, Legislature and stakeholders to secure extension of priority deadline.



What will I need to apply?

- FSA ID- Please make sure students have set up their FSA ID prior to completing their application
Starting in the 2024-25 award year, each student and contributor must create their own StudentAid.gov account to complete the FAFSA form online.
- Contributors without an SSN will also now be able to create one
- U.S Citizens – Your Social Security Number (SSN)
- Permanent resident/ eligible non-citizen.
- Your SSN & (A#) Number
- Dates – Parent married, remarried, divorced or widowed (if applicable)
- Student/ Parent(s) tax information (1040s and W2s from two years prior) if applicable
- Record of untaxed income (child support, combat pay, retirement, etc.)
- List of colleges that the students is interested in applying to



AB540 Eligibility Criteria

- 3 years high school credits and 3 years total attendance at an elementary, middle, or high school in California or
- 3 years attendance (or equivalent) at a high school, adult school, or a community College in California
- Graduate with a High School Diploma or GED equivalent
- Enroll in an accredited high education institution in California
- Must file an affidavit at school of attendance
"U" Visa holder may qualify
- Students with international student visas, visitor visas, or other "non-immigrant" statuses are not eligible to apply
- For more information on a quick guide to college access for undocumented students visit
<https://immigrantsrising.org/resource/quick-guide-to-college-access/>

Counselor Day 2024



1. What income will be reported under the 2025-2026 FAFSA/CADAA?
2. Can a student receive both federal and state financial aid at multiple institutions?
3. A student is considered a dependent student until the age of what?
4. What is a student's Pell Lifetime Eligibility?
5. Maximum Pell Amount for the 2025-2025 aid year?





Financial Aid Outreach

Event Options
FAFSA/CADAA Application Workshop
FSA ID Workshop
Financial Aid 101
Resource Table

Presentation Request

Please complete the form to request a financial aid presentation from Glendale Community College.

FINANCIAL AID PRESENTATION REQUEST FORM



SAVE THE DATE

Cash for College

Join us on

Saturday, January 25, 2025

9:00 AM - 1:00 PM

at Glendale Community College

1500 N. Verdugo Road Glendale, CA 91208

We will have the following available:

- In-Person FAFSA/CA Dream Act Application Workshop
- Resource and College Fair
- Opportunity Drawing
- Lunch will be provided



RSVP by January 17, 2025

Questions? Contact us:
818-240-1000 Ext. 5384
glendale.edu/FA





Athletics



Athletics at GCC...

- **Baseball:** 2nd in WSC South (15-6), overall 25-14. Swept L.A. Mission on April 11-12
- **Men's Tennis:** Upset Irvine Valley 5-2 in SoCal Regional semifinals, reached finals
- **Women's Basketball:** School record 30-3, 25-game win streak, lost State Championship 71-60
- **Football:** Fourth straight win, 54-20 vs. L.A. Pierce (Oct 19)
- **Men's Soccer:** 3-0 shutout vs. Canyons in WSC opener (Oct 18)
- **Women's Volleyball:** Swept Antelope Valley 3-0 in WSC match (Oct 18)



Transfer Center



Where Our Students Go



Top 3 UCs (Fall 2023)

1. UCLA
2. UCI
3. UCSD

Top 3 CSUs (Fall 2023)

1. CSUN
2. CSULA
3. CPP

Top 3 CA Private (2022-2023)

1. West Coast University
2. USC
3. Woodbury



New Program Alert! Transfer Scholars Program (TSN)

Connects talented community college students with dedicated admissions staff from up to 19 highly selective colleges and universities nationwide through a virtual online platform



TSN Four-Year Partners

1. Amherst College
2. Bates College
3. Bowdoin College
4. Brown University
5. Columbia University
6. Cornell University
7. John Hopkins University
8. Massachusetts Institute of Technology (MIT)
9. Mount Holyoke College
10. Northwestern University
11. Pomona College
12. Princeton University
13. Rice University
14. Smith College
15. Swarthmore College
16. Wellesley College
17. Wesleyan University
18. Williams College
19. Yale University



What's Happening in the World of Transfer?

- UC Dual Admission & CSU Transfer Success Pathway
- ADT Pathway
- Cal-GETC
- Common Course Numbering





UC Dual Admission

- New program for students who applied/will apply for freshman admission for the Fall 2023, 2024, or 2025 terms
- Students can get guaranteed admission to a participating campus and major (via the TAG program)
 - Must complete transfer requirements in 3 years



CSU Transfer Success Pathway

- New program for students who graduated/left high school in 2024 or prior
- Students can get guaranteed admission to a participating campus and major
 - Must complete transfer requirements in 3 years



ADT Pathway

- Students who plan to transfer where an ADT exists for their intended major will be “placed” on that ADT pathway
 - They can opt out if it doesn’t align with their transfer goals



ADTs at GCC

- Administration of Justice
- Anthropology
- Art History
- Biology
- Business Administration 2.0
- Communication Studies 2.0
- Early Childhood Education
- Economics
- Elementary Teacher Education
- English
- Film, TV, and Electronic Media
- Geography
- Geology
- History
- Journalism
- Kinesiology
- Mathematics
- Music
- Nutrition and Dietetics
(coming Fall 2025)
- Philosophy
- Physics
- Political Science
- Psychology
- Public Health
- Social Justice: Gender Studies
- Social Work and Human Services
- Sociology
- Spanish
- Studio Arts
- Theatre Arts



Cal-GETC

- Singular GE pathway for students transferring to UC or CSU
- For students beginning in **Fall 2025**
- No LOTE requirement

Area	Subject	Courses/ Units
1	English Composition Critical Thinking Oral Communication	1 course (3 units) 1 course (3 units) 1 course (3 units)
2A	Mathematical Concepts/ Quantitative Reasoning	1 course (3 units)
3	Arts Humanities	1 course (3 units) 1 course (3 units)
4	Social and Behavioral Sciences	2 courses (6 units)
5	Physical Science Biological Science Lab	1 course (3 units) 1 course (3 units) (1 unit)
6	Ethnic Studies	1 course (3 units)
	Total Units	34



Common Course Numbering

- Across the CCC system, colleges will begin implementing student-facing common course numbering in **Fall 2025**
- Phase 1:
 - ENGL 101 → ENGL C1000
 - ENGL 104 → ENGL C1001
 - MATH 136 → STAT C1000
 - SPCH 101 → COMM C1000
 - POL S 101 → POLS C1000
 - PSYCH 101 → PSYC C1000



Career Education



Explore Career Education Programs





Explore Career Education (CE) Programs!

Career Education (CE) programs, also called Career & Technical Education (CTE), are educational programs designed to lead more directly to employment & advancement in the workforce. Explore the pathways:

 <ul style="list-style-type: none"> • Biotechnology • Civil Engineering** • Cloud Computing Fundamentals • Computer Engineering** • Computer Information Systems • Computer Networking • Computer Programmer • Computer Science** • Computer Software Technician • Computer Support Technician • Cybersecurity Specialist • Electrical Engineering** • Engineering Mechanical, Aerospace, Manufacturing** • Information Technology • IT Technician I: Computer Retail Sales and Support • IT Technician II: Help Desk User Support • IT Technician III • Mechanical Engineering** • Unix/Linux System Administrator • Web Development 	 <ul style="list-style-type: none"> • Addiction Studies Counseling • Administration of Justice • Administrative Medical Assistant • Basic Electrocardiography (EKG) • Basic Medical Billing and Coding • Critical Care Nursing • Dietetic Services Supervisor • Dental Front Office/Billing and Coding • Emergency Medical Responder • Emergency Medical Technician (EMT) • Fire Technology • Fitness Specialist • Health Science • Health Occupations • Healthcare Administration • Introduction to Emergency Services • Medical Coding Assistant • Medical Front Office • Medical Records • Paramedic • Registered Nursing • Sports Coaching • Verdugo Fire Academy 	 <ul style="list-style-type: none"> • Architectural Advanced Residential Design • Architectural CAD • Architectural Commercial Design • Architectural Drafting & Design • Architectural Interior Design • Architectural Introductory Residential Design • Architectural Permit Technician • Architectural Visualization • Aviation Administration • Computer Aided Manufacturing (CAM) • Electronics & Computer Technology - Electronics Technology Technician • Engineering Technology • Engineering Technology - CAD & Design • Drafting • Flight Attendant • Machinist • Pilot Training • Welding
 <ul style="list-style-type: none"> • Accounting • Administrative Assistant • Bookkeeping • Business Administration • Business Information Worker (BIW) • Computerized Accounting Specialist • Culinary Arts • Entrepreneurship/Small Business • Financial Planning and Investment • General Business • General Office • Human Resources Assistant • Insurance Professional • Insurance Specialist: Property and Casualty • International Business • Management • Marketing • Real Estate Appraisal • Real Estate Broker • Real Estate Office Assistant • Real Estate Sales Professional • Real Estate Salesperson • Receptionist/Office Clerk • Restaurant Management • Tax Preparer 	 <ul style="list-style-type: none"> • Animation: 3D Texturing • Animation Design • Animation: Digital Modeling • Animation: Digital Sculpture • Animation: Digital Character Design • Art (Two-Dimensional and Three-Dimensional)** • Character Blogging & Animation • Choreographic Studies & Dance Technique • Commercial Music • Cinematography & Editing • Dance Teaching • Digital Content Specialist • Digital Photography • Digital Photography Technician • Drone Photography • Digital Sculpture • Film, Television, and Media Arts • Graphic Design • Motion Graphics • Music • Photography • Photographic Lighting • Studio Arts • Technical Theatre • Theatre Arts** • Traditional Photography • Visual Arts** 	 <ul style="list-style-type: none"> • Child Development - Infant/Toddler • Child Development - Teacher • Child Development - School-Age Care • Child Development - Master Teacher • Child Development - Site Supervisor • Elementary Teacher Education • Early Childhood Education • Journalism • Transitional Kindergarten



SCAN ME

glendale.edu/ExploreCareerEd

*CE Programs are subject to change due to periodic updates & staying current with labor market needs. For the most updated information, refer to the GCC catalog and website.
 **Programs are not categorized CE/Vocational as defined by the CCOO, yet are closely related to/adjacent to CE programs, industries, and industries.
 September 2024



CAREER EDUCATION

Real World Skills



What is Career Education?

Career Education (CE) programs, also called Career & Technical Education (CTE), are educational programs designed to connect students more directly to the workforce. Informed by regional labor market needs and industry professionals, they can often offer shorter timelines to completion than other college programs. They can also be a starting point to other career pathways that lead to university degrees.

Meet the Career Education (CE) Counselors

 Marisela Canela <small>CE Counselor</small>	 Gabriela Cruz <small>CE Counselor</small>	 Breanna Dulay <small>CE Counselor</small>	 Nicole Morales <small>CE Counselor</small>
----------------------------------------------------------------------------------------------------------------------------------------------	--------------------------------------------------------------------------------------------------------------------------------------------	--------------------------------------------------------------------------------------------------------------------------------------------	---------------------------------------------------------------------------------------------------------------------------------------------

Counseling Services

- Career Education Academic Counseling
- Industry relevant advising and counseling
- Workforce preparation
- Labor Market Information Analysis and Support



Meet Us: glendale.edu/ceteam

Make An Appointment : (818) 240-1000 ext. 5918

Glendale Community College does not discriminate on the basis of race, age, religious preference, gender, sexual orientation, color, national origin, or disability in its admissions policies, programs, activities or employment practices.





New Programs

Paramedic
Documentary (Film)

**GCC Film, TV & Media Arts Introduces
New Documentary Program - Spring 2025**

Documentary Film Aesthetics
Offered in Spring 2025

Documentary Filmmaking
Offered in Fall 2025

Coming Soon (2025-2026)

Entertainment Technology
Marketing and Social Media

Entertainment Technology will be taking center stage at GCC!

Experience the backstage and technical elements of Theatre. Learn theatrical design and the inner workings of theatrical equipment and practices.

Prepare for professional opportunities in live entertainment!
Contact Melody Gunter melodyg@glendale.edu for more information.

glendale.edu/EnTech

Glendale Community College does not discriminate on the basis of race, age, religion, preference, gender, sexual orientation, color, national origin, or disability in its admissions policies, programs, activities or employment practices.



Promise Plus

Fun Facts, Myths & Next Steps



Philosophy & Benefits of Promise Plus...

- Engagement
- Structured 2 year experience
- Known success-related momentum points
- Goal: Every new student is Promise Plus

Promise Plus Fun Facts!

- Spring Starts Accepted
- Flexible admissions
- Multiple Fees Covered
- Not Income-Based



Benefits of Promise Plus

- Free tuition for up to 2 years
- Dedicated Promise Plus counselors and peer mentors
- Priority registration in reserved classes for students
- Special classes to identify future majors and careers
- Success Activities
- Summer Bridge program to support college transition
- \$400 book voucher for early applicants before April 19th 2024. For more info, visit ECAP+



Requirements for Promise Plus

- Apply to GCC for summer/fall 2024
 - High school graduates who had an ID number from before must reapply as a high school graduate
- Submit 2024-2025 FAFSA/CADA
- Submit inquiry for counseling appointment
- Attend GCC full-time
- Register & complete Summer Bridge with a passing grade



Next Steps for Students...

1. High School Visits
2. College Overviews & Application Workshops
3. Early Admissions (ECAP+)
 - a. QR Code attached to survey
 - b. Schedule visits or ECAP field trips
 - c. Review data points from check-in sheet





10:30 AM - 11:30 AM

Virtual Reality Demonstrations

SV 226 (White Tickets)

Career Education Showcases

Animation, Nutrition & Culinary

GCC 101: Student Resources

Buena Vista 101 & **Vivarium & BioTech**



11:50 AM - 12:50 PM

Virtual Reality Demonstrations

SV 226 (Red Tickets)

Career Education Showcases

Theater Tech, Welding & Manufacturing

GCC 101: Student Resources

Buena Vista 101



GCC 101: Student Resources

Counselor Day 2024



GCC CARES: Student Basic Needs

- **Food & Hygiene Support:** GCC Cares Market / CalFresh Outreach
- **Transportation Support:** Go Pass & Amtrak
- **Housing, Books, Internet, & Gas Card Support:** Fresh Success Program
- **Financial Support & Service:** GCC College Corp
- **Educational Opportunities:** GCC Financial Literacy Program



The Dream Resource Center is located within the Multicultural & Community Engagement Center (MCEC) in Sierra Madre (SM) 267

The Dream Resource Center is a safe space for our undocumented students and their allies

We provide academic, personal, and career counseling to help support Dreamers students' educational journeys

We help determine AB540 eligibility and provide assistance with filling out the affidavit

We connect students to resources (both on and off campus) including information on financial aid (California Dream Act) and scholarships that are available to students

We empower undocumented students to achieve their academic and personal pursuits and reach their goals

We provide training to campus community members, and offer workshops to help inform folks about Dreamers students and their needs



The Pride Center is located within the Multicultural & Community Engagement Center (MCEC) in Sierra Madre (SM) 267.

It is open and available for students and to allies of the LGBTQ+ community

The Pride Center aims to provide a secure, supportive, and accepting environment for LGBTQ+ students

We offer workshops, trainings, and group meetings designed to bring awareness of diverse sexual and gender identities

We connect students with resources on and off campus, as needed

The Pride Center is above all a safe space for students that identify as LGBTQ+

Ultimately, the Pride Center aims to create and promote a culture of acceptance



The Rising Scholars Program is designed to create a pathway into higher education for formerly incarcerated, reentry, and system impacted individuals by addressing students' academic and social needs

Formerly Incarcerated Individuals: Justice-involved students, including incarcerated, formerly incarcerated, and or currently/ formerly detained in a juvenile facility

System-Impacted Individuals: individuals who have experienced arrest without conviction/ incarceration

We challenge stigmas associated with incarceration and provide a safe space where students can network, learn how to navigate the educational system, and develop the necessary skills to thrive in college

We help connect students to on and off campus resources as needed

We provide group workshops for students to gather and share their experiences in college and connect with peers, staff, and counselors



Concurrent Enrollment

1. Concurrent Enrollment Programs at GCC
2. Enrollment Process for Students
3. Onboarding Support



Concurrent Enrollment Programs:

1. Jump Start
2. Dual Enrollment
3. Early College Academies

- Tuition = FREE
- Students earn College Credit
- GCC Counseling & Support Services available

Please note: Private schools, like USC, may not accept dual enrollment credits. Students interested in USC or similar schools would benefit more from Jump Start classes. We encourage students to contact their high school counselor to see which options best fit their academic goals.



- Tuition = FREE
- Students earn College Credit
- GCC Counseling & Support Services available

Jump Start

- Students earn College Credit Only
- Classes open to all GCC students, CE reserves seats for select CE courses
- \$100 textbook voucher for Fall & Spring semesters
- Classes available Fall, Spring, Summer & Winter



Dual Enrollment

- GUSD & BUSD students earn H.S. elective credit
- Classes reserved for all students enrolled in a CA High School
- Required textbooks are free
- Courses only offered during the Fall & Spring
- Classes take place after school

- Tuition = FREE
- Students earn College Credit
- GCC Counseling & Support Services available

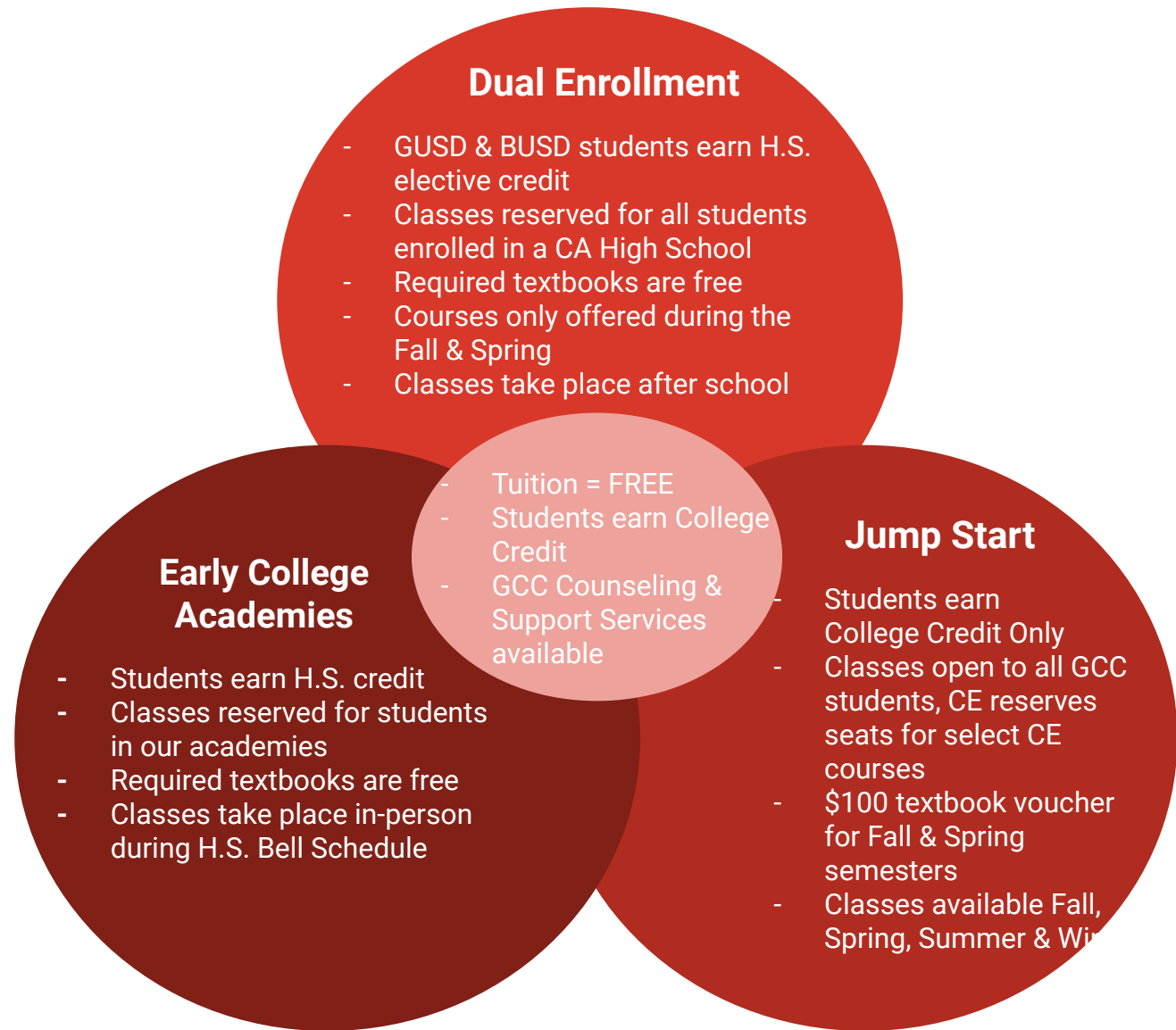
Jump Start

- Students earn College Credit Only
- Classes open to all GCC students, CE reserves seats for select CE courses
- \$100 textbook voucher for Fall & Spring semesters
- Classes available Fall, Spring, Summer & Winter



Class Modalities

- **Dual Enrollment:**
In-Person, Remote, or Online
- **Jump Start:** In-Person, Remote, or Online
- **Early College Academies:**
In-Person @ H.S partner campus





Enrollment Process

Focus on completing:

- **Step 1: Apply to GCC**
 - Move to Step 2 after receiving GCC ID#
- **Step 2: Submit Annual Digital Form**
 - GCC ID # Required to submit this form



The screenshot shows a navigation menu with icons for JUMP START, DUAL ENROLLMENT, Graduating Seniors, EARLY COLLEGE ACADEMY, and CLOUD COMPUTING & COMPUTER SCIENCE ACADEMY AT GHS. Below the menu is a breadcrumb trail: STUDENTS » Student Services » SOS - Outreach ». The main heading is HIGH SCHOOL STUDENTS. Underneath, enrollment dates are listed: Winter 2024: October 30 - January 6, 2024 and Spring 2024: December 4, 2023 - February 18, 2024. A list of six steps follows, with Step 1 and Step 2 highlighted by a red box and a red arrow pointing to it from the left. The steps are: Step 1: Apply to GCC, Step 2: Submit Annual Digital Form, Step 3: Find Classes & Clear Prerequisites, Step 4: Register for Classes, Step 5: Activate Canvas & Student Email, and Step 6: Attend Class.

www.glendale.edu/HS





Onboarding Support

Welcome Center

In-Person:

- Monday through Thursday 8:30am-5:00pm
- Friday 8:30am-3:30pm

Virtual Hours:

- Monday through Friday 10am-2pm

Services:

- Application workshops
- Refer students to resources on campus
- Tours (in-person & virtual)

Hours of Operation

In-person

Monday - Thursday: 8:30 am – 5:00pm
Friday: 8:30 am – 3:30pm

Virtual

Monday - Friday: 10:00am – 2:00 pm



WELCOME CENTER ZOOM

Welcome Center is located at **SM266**

www.glendale.edu/GCC

Phone: (818) 240-1000 x 4767

Email: Dual@glendale.edu



Onboarding Support

High School Virtual Hours

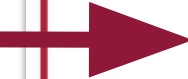

Services:

- GCC Online Application
- Annual Digital Form submissions
- Finding Classes & Clearing Prerequisites
- Registering for Classes
- Navigating MyGCC and Canvas
- Activating Student Email
- Adding/Dropping Classes

You Can Dual It

High School Virtual Hours
Tuesdays
3:30-5:00pm

Not sure about your next enrollment step? Need help navigating MYGCC or Canvas? Looking to add or drop a class? Join us for assistance via Zoom—drop-in counseling is available!



www.glendale.edu/HS
Phone: (818) 240-1000 x 4767
Email: Dual@glendale.edu



Onboarding Support

INFORMATION SESSIONS

Are you a current high school student interested in taking classes at GCC for the first time? Register for an info session to learn about our enrollment steps!

- **December 4, 2024 at 6:00 PM**
- **January 15, 2025 at 6:00 PM**
- **January 29, 2025 at 4:30 PM**



**SCAN TO SAVE
YOUR SPOT!**





Questions?

Contact Info for Counselors,
Administrators, & Community Leaders:



Contact & Resources for Students:

Stay in touch :



Questions?
818-240-1000 Ext 4767



Dual@glendale.edu
[glendale.edu/Dual](mailto:Dual@glendale.edu)

Visit our Welcome Center for
Enrollment Help

Student Resources

1. **Learning Center:** Remote tutoring, workshops, and study tips.
2. **Canvas Support:** If you are having trouble with accessing Canvas.
3. **GCC Library:** Check out books, laptops, iPads, hotspots, webcams, and calculators.
4. **GCC GoPass:** FREE public transportation on LA Metro and Beeline transit lines.



Daisy N. Lovo

Programs & Services
Senior Specialist

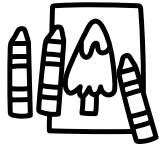
818-240-1000 Ext. 3331
Email: dlovo@glendale.edu

1500 North Verdugo Road
Glendale, CA 91208-2894

www.glendale.edu/hs



GCC Scholars (Honors) Mission...



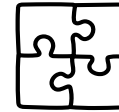
Academics

Honors classes that lead to academic growth and transfer preparation.



Service

Service to GCC and the community overall.



Fellowship

Build connections and experiences within the organization that build character and collaboration.





About Us!

Meetings

We hold biweekly meetings for every committee, ensuring that our members are kept up to date and given an outlet for any questions or concerns to be voiced. Additionally we conduct monthly all-program general assemblies (GAs).

Events

Each committee is responsible to host events. The committees, Social Events, Community Service, Arts & Culture, Fundraising and Outreach, work to create a great college experiences for all Scholars.

Cabinet

Cabinet works together to provide the most insightful and enjoyable events and meetings for all our members. Our goals are to make sure everyone feels welcomed and equal, manage policies, and to make Scholars' time at GCC as pleasant and involved as we can!





Requirements!

High school Seniors or Graduates

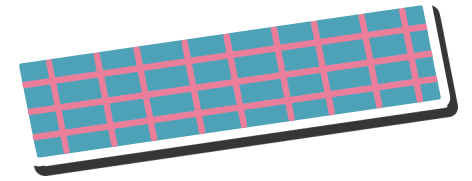
- Minimum of a 3.25 cumulative GPA (unweighted)
- Successful completion of college preparatory coursework
- Provide supporting documents

Academics & Participation

- Scholars are required to take at least 15 units of Honors courses.
- Must maintain a 3.0 GPA
- Scholars are required to involve themselves in our events, meetings, and General Assemblies.



Benefits!



Transfer

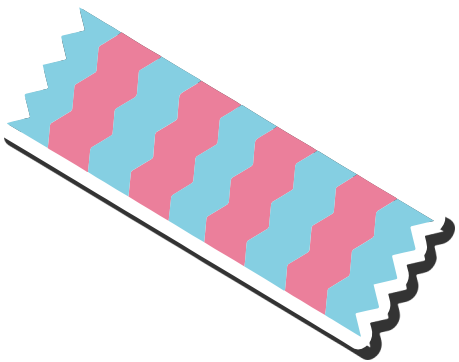
- Access to Honors to Honors programs
- UCLA TAP
- Honors Transfer Council of California Transfer Partners

Character

- Our Program does not aim to pad resumes, rather to encourage intrinsic growth in deeper goals. Such as working within a larger organization, developing character, and understanding compassion outside of a hierarchy.

Community

- Students gain a sense of community while learning the value of uplifting each other.
- Focusing on developing a true sense of self with virtuous traits that will serve a student in the professional world.





Adult Basic & Secondary Education

GED/HiSET Test Prep	High School Diploma	College Prep Courses	Adult Basic Education
<ul style="list-style-type: none">• Flexible class schedule• Remote, in person, hyflex, asynchronous instructions• On site testing	<ul style="list-style-type: none">• Adults 18 and over (17 1/2 with waiver)• Open-entry, self-paced• All subjects offered• Online, asynchronous	<ul style="list-style-type: none">• ABSE 186 - Essentials Reading & Writing I• ABSE 187 - Essentials Reading & Writing II• ABSE 121 - Algebra Review• ABSE 122 - Statistics Review	<ul style="list-style-type: none">• Improve Reading, Writing and Math• Convenient instructor led in person & remote classes• Open entry and ongoing enrollment• Earn an ABSE Certificate



Email: studentsuccesscenter@glendale.edu

Call: 818-240-1000 ext. 5686, 5050, or 5045

MP 211-Garfield Campus, 1122 East Garfield Ave, 91205





Student Success Center High School Classes

Online

Self-Paced

Teacher Guided w/ drop-in help hours

- Year Round= credit recovery
- Summer= credit advancement

Counselor & Parent Permission Required



FREE SUMMER SCHOOL CLASSES

For Incoming 9th and current high school student advancement



- Health
- Ethnic Studies (new)
- World History
- U.S. History
- Economics
- American Government
- Geometry
- Algebra, and many more

Classes are Tuition FREE, Self-Paced, and Teacher Guided

In Addition to The List Above, High School Recovery Classes are Offered Year Round

- English 9
- English 10
- English 11
- English 12
- Vocabulary
- Integrated Math 1
- Integrated Math 2
- Integrated Math 3
- Algebra 1
- Algebra 2
- Arithmetic
- Physical Science
- Life Science
- Art History
- World Geography
- Psychology

Serving GUSD, LAUSD, Burbank, Pasadena & greater Los Angeles community





GCC's Baja California Field Studies

50 years of academic excellence

Classes are open to all; including current high school students in dual enrollment

- application/interview required

Limited scholarship support available

Life-changing experience with experienced & passionate instructors



Winter 2025 BIOL 48

Biology International Field Studies
PROFESSOR GREG MEYER
2 UNITS

Monday, January 27, 2025
at Glendale Community College

Tuesday, January 28 - Friday, February 7, 2025
at our field station in Bahía de los Angeles, Baja California, Mexico

Total Cost is \$899
plus standard winter session enrollment fees

Before you register for the class, you must complete a Baja Program application

Dr. Maria Kretzmann
mkretzma@glendale.edu

Baja California Field Studies Program
baja@glendale.edu

APPLY NOW!
For more information visit: glendale.edu/baja

WINTER 2025 offerings subject to Board of Trustees approval





Extended Opportunities Programs and Services (EOPS)

Specialized counseling support program offering guidance, support and additional resources to help students identify and achieve their educational goals.

EOPS benefits include:

- Academic Counseling and Career advisement
- Book voucher & EOPS Grant
- Priority registration
- College Orientation course (STDV 100)
- Emergency loans & university application fee waivers
- Extra tutoring
- Scholarship and job recommendations

Sub Programs

- CARE Program Services & Foster Youth Support Program

EOPS-CARE-FYSP



www.glendale.edu/eops
eopsdesk@glendale.edu

(818) 240-1000 Ext. 6900
Located on the 3rd floor of
the Sierra Vista Building



DSPS Overview

DSPS serves individuals with verified disabilities, including:

- ADHD
- Acquired brain injury
- Autism
- Blind/low vision
- Deaf/hard of hearing
- Developmental/intellectual disability
- Mental health
- Physical
- Specific learning disability & and other as deemed a disability by a qualified professional

Please contact DSPS via

- Email: csd@glendale.edu
- Phone: 818-240-1000 ext 5905
- In Person: San Gabriel (SG) 128
Mon-Thurs: 8am-4:30pm
Fri: 8am-3pm

We work to destigmatize disabilities, empower our students, and educate the college community



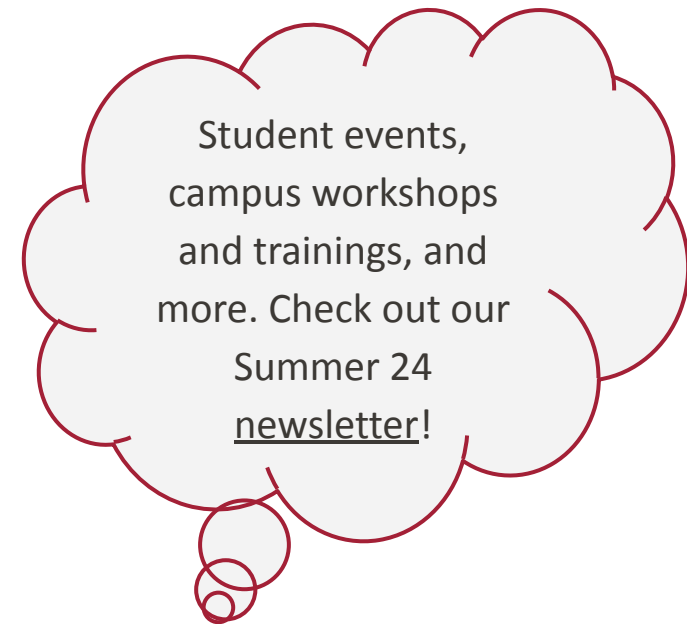
How to Get Started with DSPS

- To register with DSPS, a student must complete a DSPS application and submit a verification of a disability (such as an IEP, 504 plan, etc.) to the Center for Students with Disabilities (CSD).
- After they submit their documents, the student makes an appointment to meet with a DSPS counselor. During that appointment, they will have an intake, share their background, and complete an Academic Accommodation Plan and a term-specific Student Educational Contract.
- A referral is then sent to the Accommodations Resource Center (ARC). The student will meet with ARC Specialists to set up accommodations and services.
- Students are responsible for setting up services and accommodations in a timely manner each term. Services and accommodations do not automatically “roll over” each term.



DSPS Provides Accommodations Based on Eligibility & Need...

- Academic counseling
- Alternative media, such as audio books and Braille
- ASL interpreting
- Assistance with study strategies
- Assistive technology, such as text-to-speech and speech-to-text
- Extended time on tests and quizzes
- Note taking &
- Priority registration
- Real time captioning
- Tram services on campus
- Tutoring in credit math/credit English





DSPS Offers Classes...

Physical Education (Adapted); transferable to CSU, UC, and USC

PE 130 Adapted Activities

PE 131 Adapted Self Defense (Tai Chi)

PE 132 Adapted Aquatics (at the Rose Bowl Aquatics Center)

PE 134 Adapted Wellness & Fitness Lab

PE 135 Adapted Indoor Cycling (spin)

Dance 150: Physical Reintegration (transferable to CSU)

Student Development

St Dv 105 College Success for Students with Disabilities
(transferable to CSU/UC)

St Dv 143 Study Skills Lab (tutoring for credit English/credit math and study strategies)

St Dv 190 Intro to Adapted Word Processing

St Dv 191 Intro to Microsoft Office 365/Google Suite

St Dv 192 Intro to Assistive Technology

St Dv 193 Computer Technology Literacy



Incoming High School Students

Incoming high school students (and their parents) should understand that DSPS is **not** a continuation of special education. Special education does not exist in college/university.

- Classes and course content are not modified (changed) for students registered with DSPS. For ex, a student with DSPS cannot complete fewer assignments, take fewer tests/quizzes, or be graded on a different scale than non-DSPS students.
- Students are expected to advocate for themselves. Third parties, such as a parent/guardian, may attend an appointment *if* the student provides a **Family Educational Rights and Privacy Act (FERPA)** waiver for that particular appointment. FERPA protects the privacy of students' educational records and gives students control over who can access their information, including during appointments.
- Dual-enrolled high school students are considered college students. Therefore, FERPA is in place and accommodations/services established via DSPS apply, not those outlined in an IEP or 504 Plan.



Learning community for GCC's Black / African American students

- Provides an enhanced college experience through community
- Academic and career counseling to help with educational, personal, and career goals
- Social mixers to connect with other Black Scholars and stay engaged while in college
- Group meetings to explore identity and celebrate culture
- Trips to universities, including HBCUs, to explore educational goals and steps beyond GCC

Learning community for GCC's Latina/o/e/x students

- A safe space where identities are nurtured and culture is celebrated
- Opportunities to connect with peers through social mixers, activities, and group meetings
- Opportunities to make friends, stay engaged, and feel supported
- Designated counselors to help support students' educational and career goals
- University tours to explore transfer options

Learning community for APIDA students

- Opportunities to connect with peers through social mixers
- Designated counselors to help support educational and career goals
- Local field trips with peers to explore, learn, and grow
- Group meetings are engagement based to help students make connections with peers, staff, counselors, and faculty
- End of Year Celebration



The goals of MESA are to help underserved and underrepresented students majoring in calculus based science, technology, engineering and mathematics (STEM) transfer to four-year institutions of higher education

Majors include: Biology | Biochemistry | Chemistry | Computer Science | Engineering | Math | Physics | Pre-Med | Geology





Short video

Benefits of joining Mesa:

- Peer-led Academic Excellence Workshops (AEWs), tutoring and speaker series
- Access to a **STEM/MESA** Counselor
- Scholarship opportunities
- Semester-long material loans
- Community of STEM majors to support one another
- Study space (temporarily in AD 232G - the back room of the Learning Center)
- Professional development opportunities
- Networking opportunities
- Internship and research experience opportunities

Experience authentic, hands-on research in microbiology and molecular biology



BIOL 298 - Undergraduate Research in Biology

Prerequisite:

BIOL 101 -General Bio
OR

BIOL 112: Microbiology

Chem 298 - Chemistry Research

1. More than **90 students** trained so far
2. Four alums currently pursuing Ph.D.
4. Five alums earning M.S.
5. 35 alums pursuing B.S. degree
6. Many **students have presented their original work** at college-wide, regional, state, and national conferences.

GCC Biology internship at NHMLAC (Biol 50)



NATURAL
HISTORY
MUSEUM
LOS ANGELES COUNTY

INT 51 Team Internships

Check out our business partners, past & present below:



USC Institute for Creative Technologies



Metro



VITAL NURSE SERVICES



Go Baby Go Internship

1. 35 students trained
2. Interdisciplinary teams
3. Eleven families with special needs children provided customized car



Healthcare Professions Internship at Glendale Memorial Hospital



Biotechnology Certificate and AS Degree Programs



Biology Undergraduate Research Collaborative

- 3-tiered stackable Certificate Program and AS degree achievable in 1 to 2 years
- Recommended for Bio-majors and non-majors
- Receive hands-on laboratory and work-ready experience, knowledge, and skills to work in biotech industry and academic institutions
- **Biotech courses with authentic research experiences:** Bio 298 (summers only; apply), Bio 141 (offered Spring 2025: M & W 1:55 -6:35 pm), Bio 142 (TBA)
- **Opportunities to present research work at regional, state, & national research conferences**
- **Internships & Apprenticeship opportunities**
- **Laboratory skills in molecular and cell biology, genetics, and microbiology:** cloning, DNA & protein isolation, quantification, & purification; good documentation and lab practices
- **Work-readiness skills:** oral presentation, team building exercises, resume writing, interview skill
- **Careers:** manufacturing technician, laboratory technician, quality control technician, laboratory support workers, laboratory assistants, research associate, scientist, etc.
- **Entry level starting salary:** ~\$22/hr. Higher with BS degree.
- **Financial support for low-income:** covers tuition and supplies → •Stipend from GCC + Verdugo Jobs Center = ~ \$3000
- **Contact info:** Dr. Shelley Thai at sthai@glendale.edu; (818) 240-1000 x5889





High School Career Pathways



High School CTE Articulation



Contact:
Alejandra Gonzalez

Email:
ngonzalez@glendale.edu

**Phone: (818) 240-1000 ext.
5302**



Free Healthcare Courses

- **Administrative Medical Assistant (AMA)** – front office skills (billing and coding) morning
- **Medical Clinical** – back office skills; taken together AMA and MC prepare for CA certification
- **Home Caregiver/Aide** – personal caregivers/aides in the home
- **Certified Nursing Assistant (CNA)** – basic nursing care in the direct care of patients in a variety of settings and preparation for CA certification



Computer Applications

- **Google Workspace Certificate** – Fundamentals and Intermediate classes
- **Microsoft Applications Certificate**—Coming Fall 2025, as well as Microsoft 365 Certificate through Microsoft
- **Information Technology Fundamentals** – Coming Fall 2025
- **Mirrored Classes: Noncredit to Credit certificates: Intro to Engineering and**
- **Intro to Interior Design**



COMPUTER SKILLS

- Introduction to Computers, Internet, Windows
- Keyboarding: beginning, intermediate, and advanced
- Integrated Technology
- Introduction to Information Technology

OFFICE SKILLS

- Business Writing—Letters, Emails
- On the Job Communication and Customer Service
- 21st Century Employment Strategies



Accounting

- QuickBooks
- Sage
- Business Math and 10 Key Calculators
- Beginning and Advanced Account Clerk

For more information about these courses, contact Yazeret Mascorro at (818) 240-1000 x 5031 or email mascorro@glendale.edu



- Benefits
 - Friendships
 - Experiences
 - Self-development
- Accessibility
 - Price
 - Scholarships
- Future Programs

